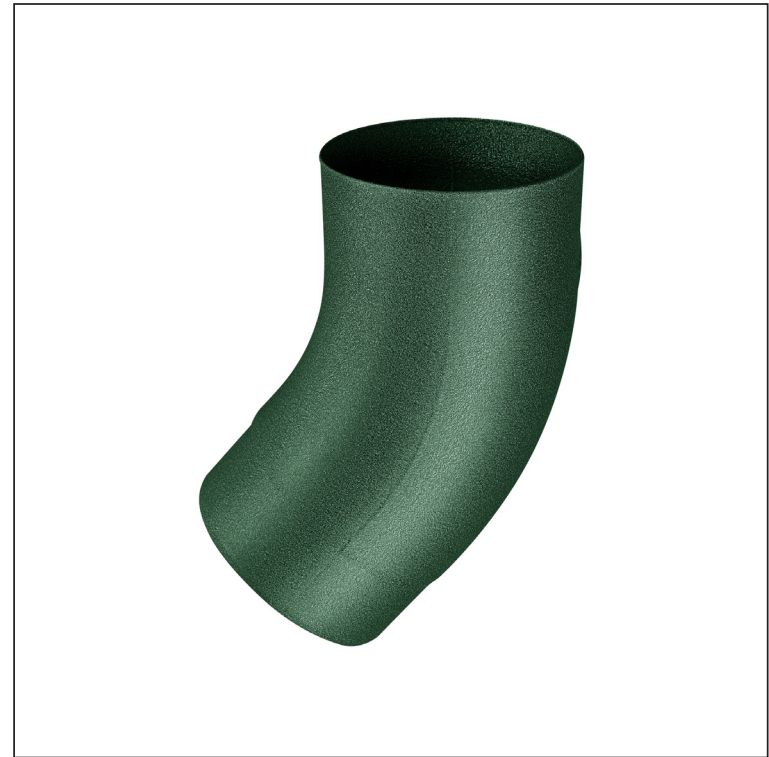


TECHNICAL SHEET

# ELBOW BLIND 40°

# W.15-WKT



Aluminium pre-painted W.15 – Moss green W.15 – RAL 6005

Dimensions [mm]					
Nominal size	$\text{Ø} A$	$\text{Ø} B$	$\text{Ø} C$	D	E
80	80,4	79	76,9	28	40
100	100,4	99,0	96,8	35	50
120	120,3	119,0	116,7	42	60

INDEX	CHANGE	DATE	SIGNATURE		
MATERIAL BRAND			W.C.	WEIGHT kg	SCALE
SIZE, SEMI-FINISHED PRODUCTS				STN STANDARD	SORTING NUMBER
AUXILIARY EQUIPMENT				NOTE	POSITION NUMBER
ELABORATED BY Ing. Kluska M.				OLD DRAWING	DRAWING NUMBER
TESTED BY					
TECHNOLOGIST			TECHNOLOGIST		
NAME			Elbow blind 40°		
			Number of sheets	W.15-WKT	Sheet

Created: 07.06.2026 21:44:00

Technical changes reserved