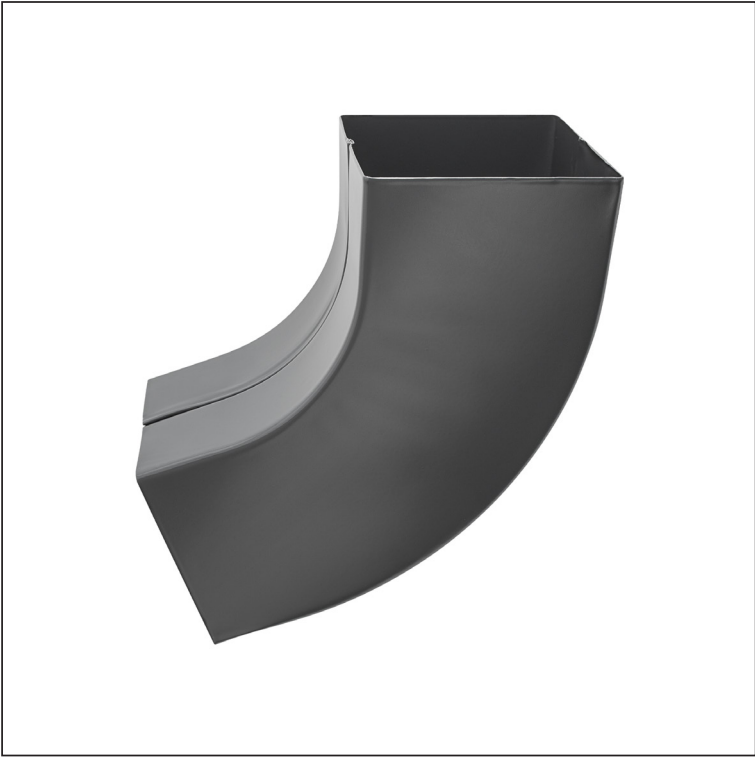


TECHNICAL SHEET

ELBOW SQUARE 72°

PH-PKH



AN Galvanized steel prepainted – Anthracite – RAL 7016

Dimensions [mm]			
Nominal size	AxA	A1xA1	L
80/80	78x78	83x83	210
100/100	98x98	103x103	270

INDEX	CHANGE	DATE	SIGNATURE	KJG QUALITY®	Scan code for 3D model	
MATERIAL BRAND				W.C.	WEIGHT kg	SCALE
SIZE, SEMI-FINISHED PRODUCTS					STN STANDARD	SORTING NUMBER
AUXILIARY EQUIPMENT					NOTE	POSITION NUMBER
ELABORATED BY Ing. Kluska M.						
TESTED BY						
TECHNOLOGIST		TECHNOLOGIST		OLD DRAWING	DRAWING NUMBER	
NAME				PH-PKH		
Elbow square 72°				Number of sheets		Sheet

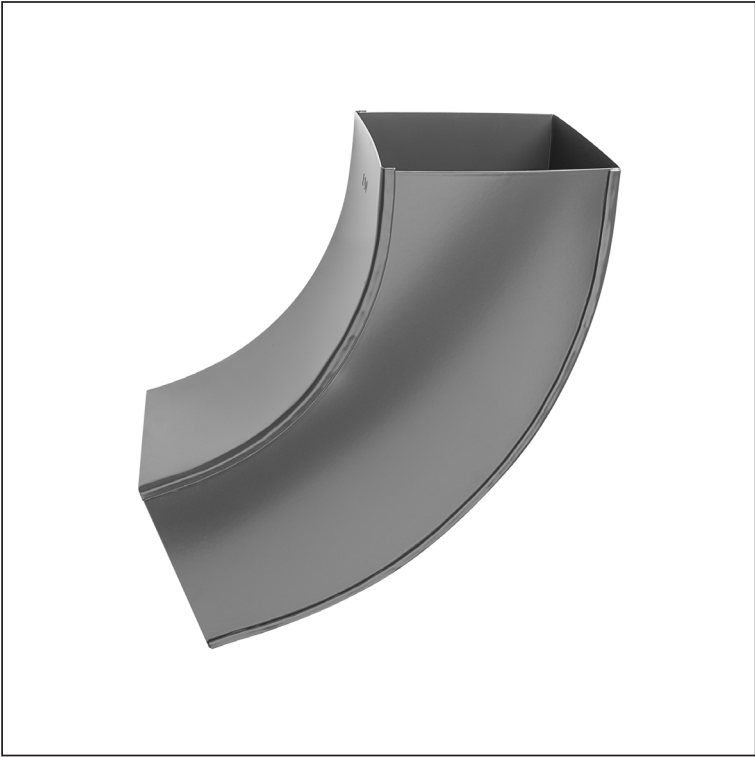
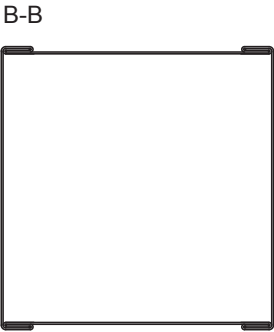
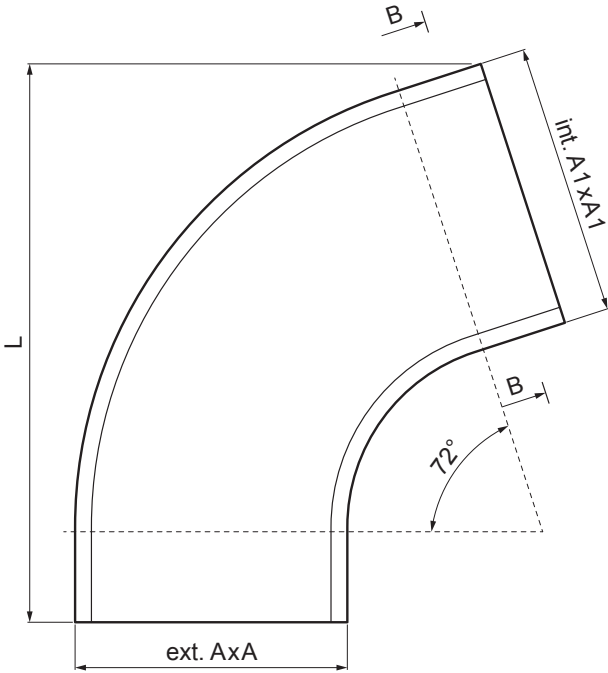
Created: 04.12.2025 10:34:29

Technical changes reserved

TECHNICAL SHEET

ELBOW SQUARE 72°

PH-PKH



AN Galvanized steel prepainted – Anthracite – RAL 7016

Dimensions [mm]			
Nominal size	AxA	A1xA1	L
120/120	118x118	123x123	300
150/150	148x148	153x153	350

INDEX	CHANGE	DATE	SIGNATURE	KJG QUALITY ®	Scan code for 3D model	
MATERIAL BRAND				W.C.	WEIGHT kg	SCALE
SIZE, SEMI-FINISHED PRODUCTS					STN STANDARD	SORTING NUMBER
AUXILIARY EQUIPMENT					NOTE	POSITION NUMBER
ELABORATED BY Ing. Kluska M.						
TESTED BY						
TECHNOLOGIST		TECHNOLOGIST		OLD DRAWING	DRAWING NUMBER	
NAME				PH-PKH		
Elbow square 72°				Number of sheets	Sheet	

Created: 04.12.2025 10:34:29

Technical changes reserved