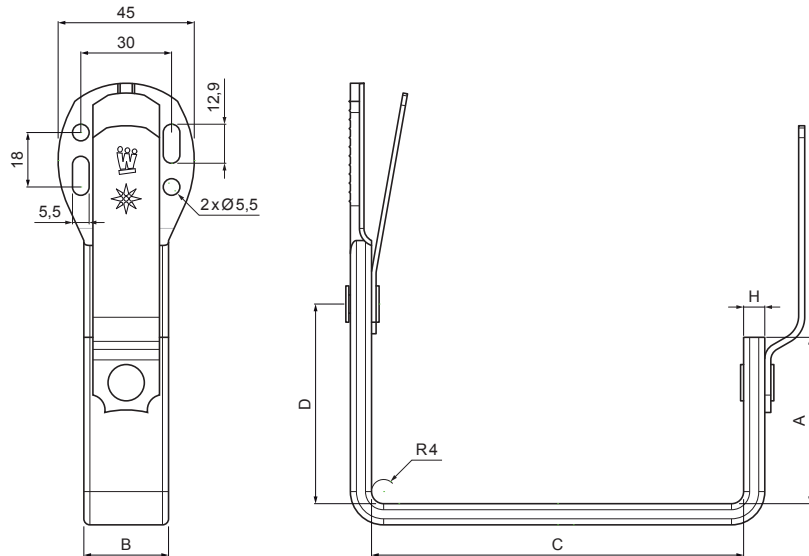


TECHNICAL SHEET

HOOK FASCIA SQUARE

WH-WHHK



ZS Aluminium preprinted – Zinc grey – RAL extra

| Dimensions [mm] | | | | |
|-----------------|----|--------|-----|----|
| Nominal size | A | B x H | C | D |
| 250 | 38 | 28 x 7 | 87 | 48 |
| 333 | 55 | 28 x 7 | 123 | 66 |
| 400 | 68 | 28 x 7 | 153 | 82 |

| | | | | | | |
|------------------------------|--------|--------------|-----------|-------------------------|------------------------|-----------------|
| INDEX | CHANGE | DATE | SIGNATURE | KJG QUALITY ® | Scan code for 3D model | |
| | | | | | | |
| MATERIAL BRAND | | | | W.C. | WEIGHT kg | SCALE |
| SIZE, SEMI-FINISHED PRODUCTS | | | | | STN STANDARD | SORTING NUMBER |
| AUXILIARY EQUIPMENT | | | | | NOTE | POSITION NUMBER |
| ELABORATED BY Ing. Kluska M. | | | | | | |
| TESTED BY | | | | | | |
| TECHNOLOGIST | | TECHNOLOGIST | | OLD DRAWING | DRAWING NUMBER | |
| NAME | | | | WH-WHHK | | |
| Hook fascia square | | | | Number of sheets | Sheet | |

Created: 19.01.2026 23:35:16

Technical changes reserved