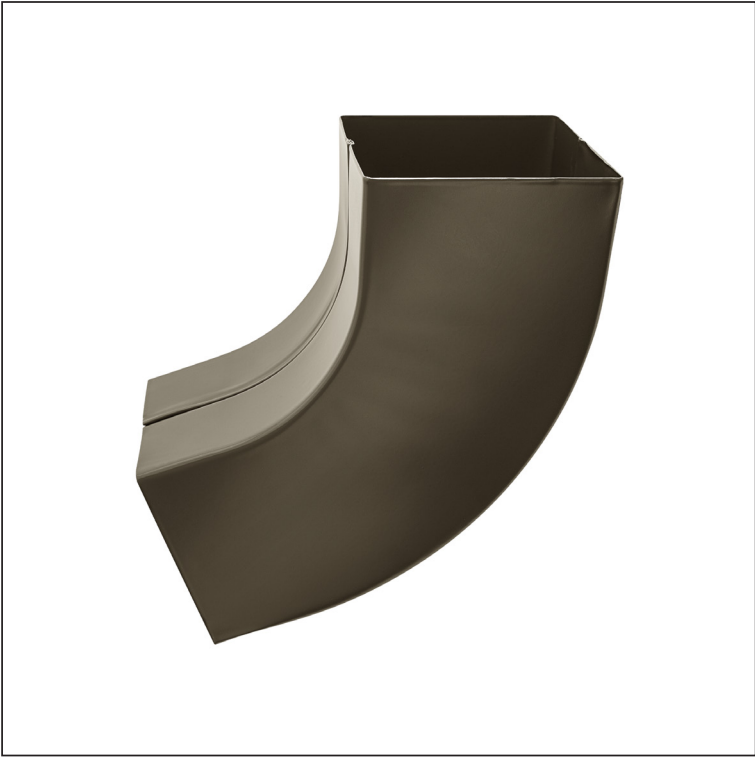
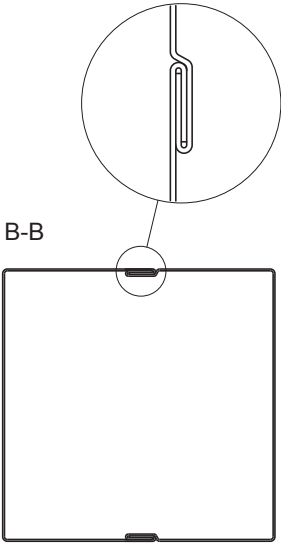


TECHNICAL SHEET

ELBOW SQUARE 72°

WH-WKH



ZH Aluminium pre-painted – Brown grey – RAL 7013

| Dimensions [mm] | | | |
|-----------------|-------|---------|-----|
| Nominal size | AxA | A1xA1 | L |
| 80/80 | 78x78 | 83x83 | 210 |
| 100/100 | 98x98 | 103x103 | 270 |

| | | | | | | |
|------------------------------|--------|--------------|------------------|------------------------|------------------------|--|
| INDEX | CHANGE | DATE | SIGNATURE | KJG QUALITY® | Scan code for 3D model | |
| | | | | | | |
| MATERIAL BRAND | | | W.C. | WEIGHT kg | SCALE | |
| SIZE, SEMI-FINISHED PRODUCTS | | | | | | |
| AUXILIARY EQUIPMENT | | | STN STANDARD | | SORTING NUMBER | |
| ELABORATED BY Ing. Kluska M. | | | NOTE | | POSITION NUMBER | |
| TESTED BY | | | | | | |
| TECHNOLOGIST | | TECHNOLOGIST | OLD DRAWING | | DRAWING NUMBER | |
| NAME | | | Elbow square 72° | | Number of sheets | |
| | | | | | WH-WKH | |
| | | | | | Sheet | |

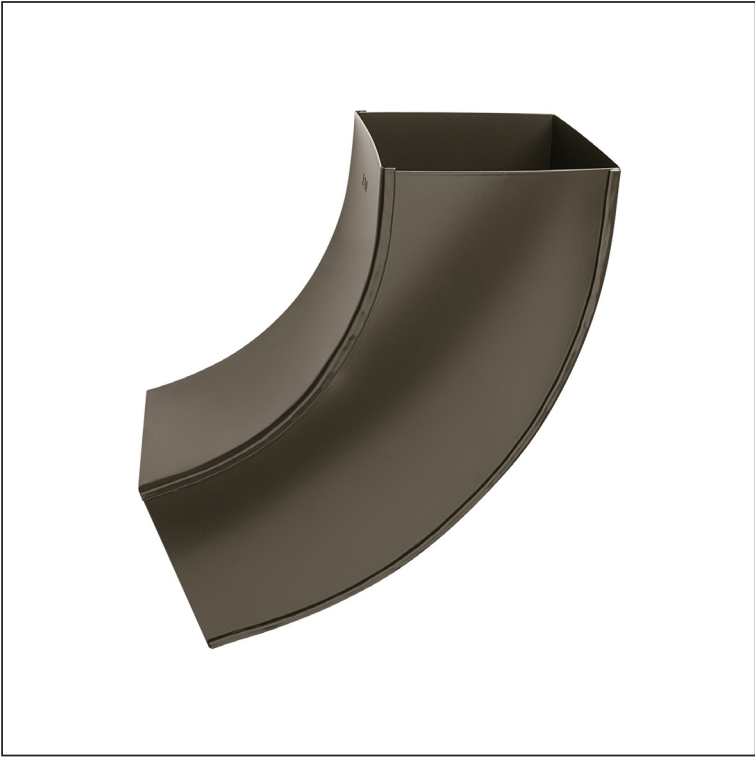
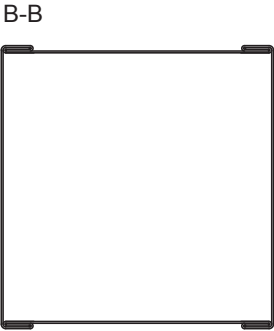
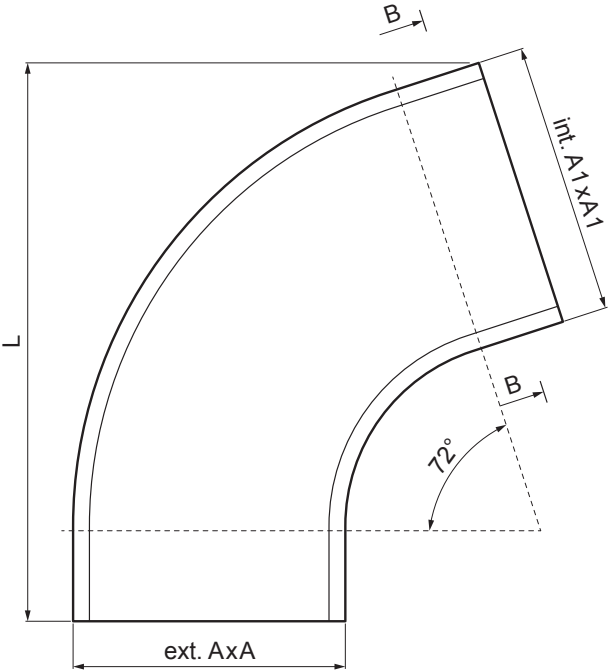
Created: 19.01.2026 22:18:49

Technical changes reserved

TECHNICAL SHEET

ELBOW SQUARE 72°

WH-WKH



ZH Aluminium pre-painted – Brown grey – RAL 7013

| | | | | | | |
|------------------------------|--------|------|------------------|------------------------|------------------------|--|
| INDEX | CHANGE | DATE | SIGNATURE | KJG QUALITY® | Scan code for 3D model | |
| | | | | | | |
| MATERIAL BRAND | | | W.C. | WEIGHT kg | SCALE | |
| SIZE, SEMI-FINISHED PRODUCTS | | | STN STANDARD | | SORTING NUMBER | |
| AUXILIARY EQUIPMENT | | | NOTE | | POSITION NUMBER | |
| ELABORATED BY Ing. Kluska M. | | | OLD DRAWING | | DRAWING NUMBER | |
| TESTED BY | | | DRAWING NUMBER | | DRAWING NUMBER | |
| TECHNOLOGIST | | | TECHNOLOGIST | | TECHNOLOGIST | |
| NAME | | | Elbow square 72° | | Number of sheets | |
| | | | | | WH-WKH | |
| | | | | | Sheet | |

Created: 19.01.2026 22:18:49

Technical changes reserved

| Dimensions [mm] | | | |
|-----------------|-----------|-----------|-----|
| Nominal size | AxA | A1xA1 | L |
| 120/120 | 118 x 118 | 123 x 123 | 300 |