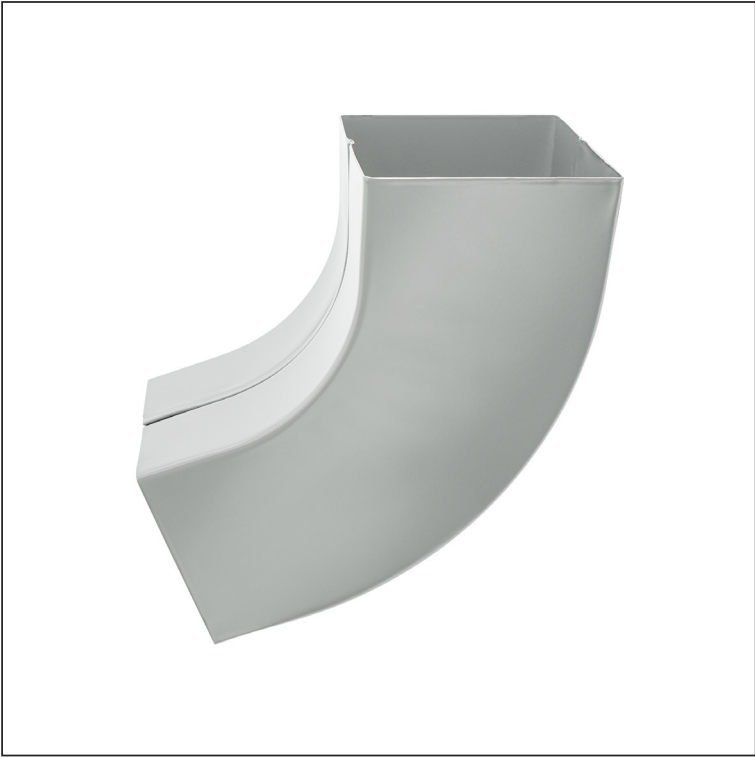


TECHNICAL SHEET

# ELBOW SQUARE 72°

WH-WKH



**ZS** Aluminium preprinted – Zinc grey – RAL extra

Dimensions [mm]			
Nominal size	AxA	A1xA1	L
80/80	78x78	83x83	210
100/100	98x98	103x103	270

INDEX	CHANGE	DATE	SIGNATURE	<b>KJG</b> QUALITY®	Scan code for 3D model	
MATERIAL BRAND				W.C.	WEIGHT kg	SCALE
SIZE, SEMI-FINISHED PRODUCTS					STN STANDARD	SORTING NUMBER
AUXILIARY EQUIPMENT					NOTE	POSITION NUMBER
ELABORATED BY Ing. Kluska M.						
TESTED BY						
TECHNOLOGIST		TECHNOLOGIST		OLD DRAWING	DRAWING NUMBER	
NAME				WH-WKH		
Elbow square 72°				Number of sheets	Sheet	

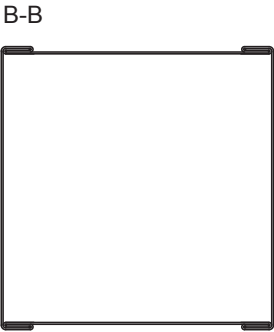
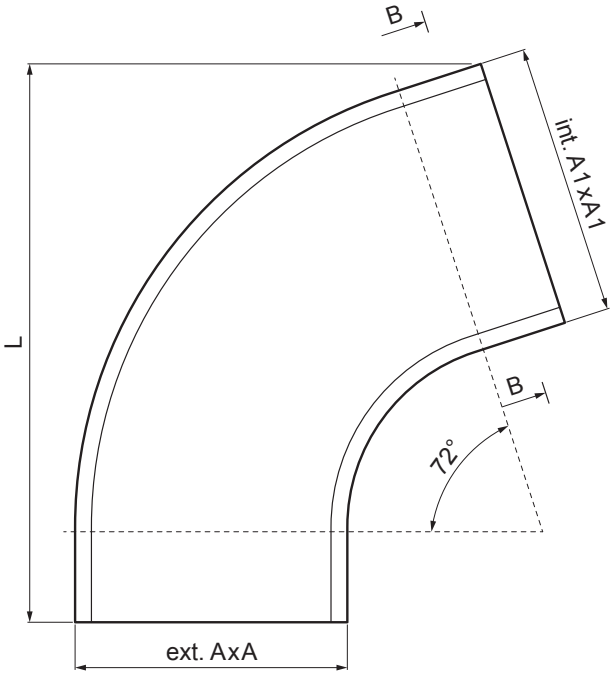
Created: 20.01.2026 04:00:30

Technical changes reserved

TECHNICAL SHEET

# ELBOW SQUARE 72°

WH-WKH



**ZS** Aluminium pre-painted – Zinc grey – RAL extra

Dimensions [mm]			
Nominal size	AxA	A1xA1	L
120/120	118 x 118	123 x 123	300

INDEX	CHANGE	DATE	SIGNATURE	<b>KJG</b> QUALITY®	Scan code for 3D model	
MATERIAL BRAND			W.C.	WEIGHT kg	SCALE	
SIZE, SEMI-FINISHED PRODUCTS						
AUXILIARY EQUIPMENT			STN STANDARD		SORTING NUMBER	
ELABORATED BY Ing. Kluska M.			NOTE		POSITION NUMBER	
TESTED BY						
TECHNOLOGIST		TECHNOLOGIST	OLD DRAWING		DRAWING NUMBER	
NAME			Elbow square 72°		Number of sheets	
					WH-WKH	
					Sheet	

Created: 20.01.2026 04:00:30

Technical changes reserved