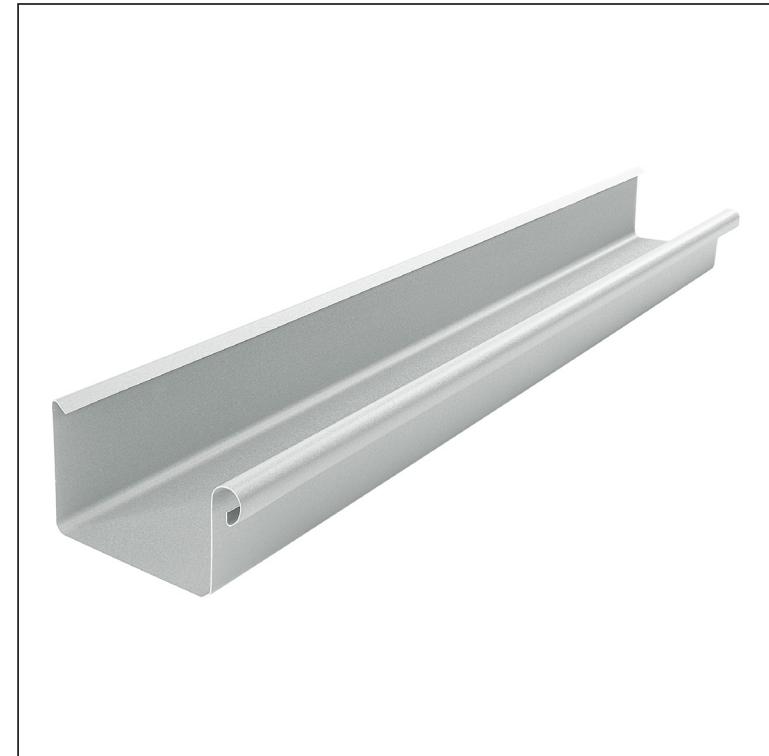


TECHNICAL SHEET

# GUTTER SQUARE [s=0,70]

# W.15H-WZHD



**ZSM** Aluminium pre-painted W.15 – Zinc grey W.15 – RAL extra

|                              |        |      |                        |                        |                        |                  |
|------------------------------|--------|------|------------------------|------------------------|------------------------|------------------|
| INDEX                        | CHANGE | DATE | SIGNATURE              | <b>KJG</b><br>QUALITY® | Scan code for 3D model |                  |
|                              |        |      |                        |                        |                        |                  |
| MATERIAL BRAND               |        |      | W.C.                   | WEIGHT kg              | SCALE                  |                  |
| SIZE, SEMI-FINISHED PRODUCTS |        |      |                        | STN STANDARD           | SORTING NUMBER         |                  |
| AUXILIARY EQUIPMENT          |        |      |                        | NOTE                   | POSITION NUMBER        |                  |
| ELABORATED BY Ing. Kluska M. |        |      |                        | OLD DRAWING            | DRAWING NUMBER         |                  |
| TESTED BY                    |        |      |                        |                        |                        |                  |
| TECHNOLOGIST                 |        |      | TECHNOLOGIST           |                        |                        |                  |
| NAME                         |        |      | Gutter square [s=0,70] |                        | Number of sheets       | W.15H-WZHD Sheet |

Created: 04.06.2026 10:59:42

Technical changes reserved

| Dimensions [mm] |      |    |     |   |    |   |        |
|-----------------|------|----|-----|---|----|---|--------|
| Nominal size    | S    | A  | B   | C | ØD | E | F min. |
| 250             | 0,70 | 55 | 85  | 7 | 18 | 5 | 10     |
| 333             | 0,70 | 75 | 120 | 7 | 20 | 6 | 11     |
| 400             | 0,70 | 90 | 150 | 9 | 22 | 6 | 11     |