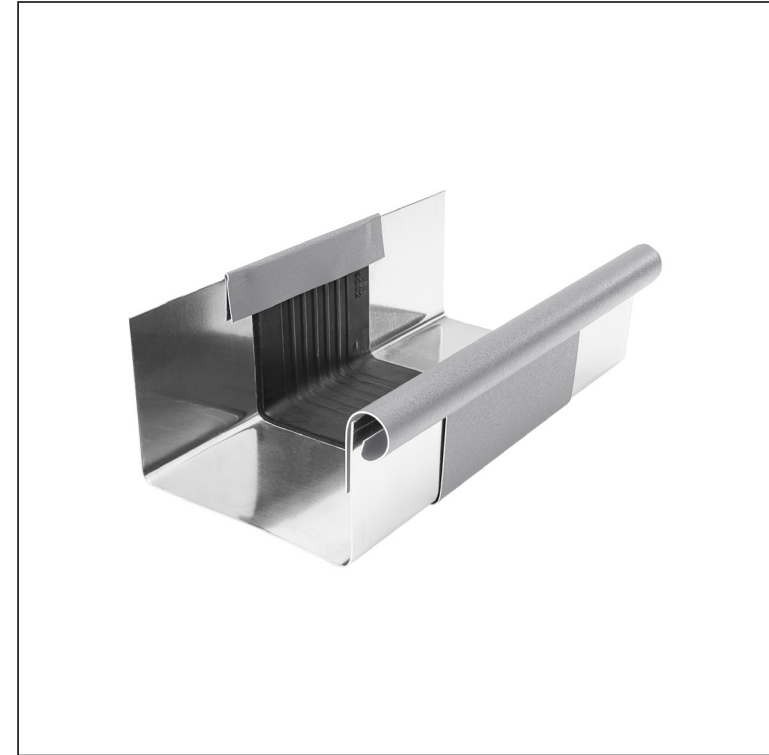
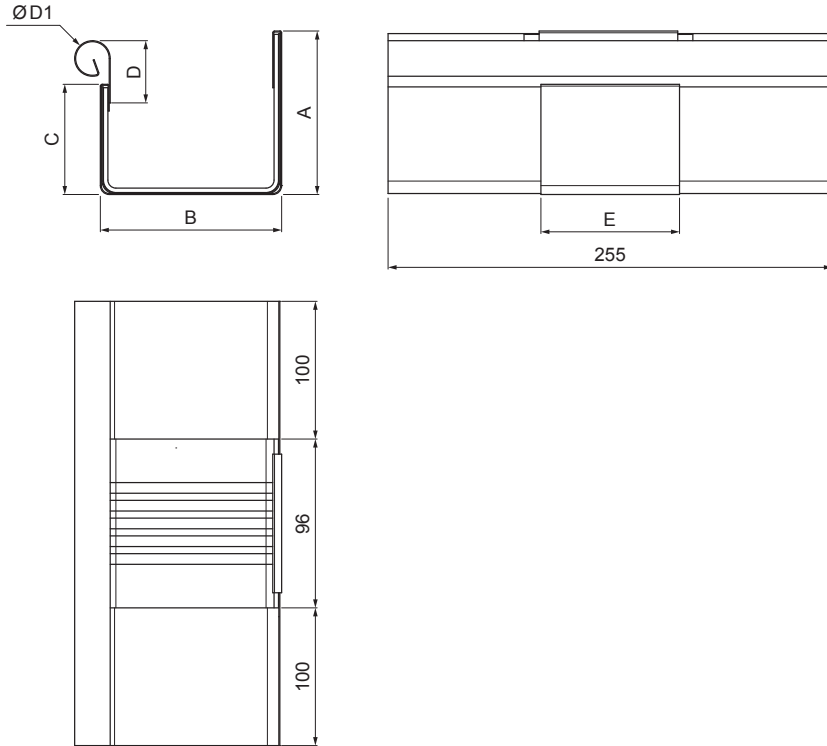


TECHNICAL SHEET

# GUTTER EXPANDER SQUARE

# W.15H-WZHDI



**BHM** Aluminium pre-painted W.15 – White aluminum W.15 – RAL 9006

| Dimensions [mm] |    |     |    |    |       |    |
|-----------------|----|-----|----|----|-------|----|
| Nominal size    | A  | B   | C  | D  | Ø D 1 | E  |
| 250/260         | 49 | 84  | 56 | 33 | 19    | 77 |
| 333/260         | 70 | 120 | 76 | 40 | 21    | 78 |
| 400/260         | 85 | 150 | 89 | 35 | 23    | 85 |

|                                |        |              |           |                        |                        |
|--------------------------------|--------|--------------|-----------|------------------------|------------------------|
| INDEX                          | CHANGE | DATE         | SIGNATURE | <b>KJG</b><br>QUALITY® | Scan code for 3D model |
|                                |        |              |           |                        |                        |
| MATERIAL BRAND                 |        |              | W.C.      | WEIGHT kg              | SCALE                  |
| SIZE, SEMI-FINISHED PRODUCTS   |        |              |           | STN STANDARD           | SORTING NUMBER         |
| AUXILIARY EQUIPMENT            |        |              |           | NOTE                   | POSITION NUMBER        |
| ELABORATED BY Ing. Kluska M.   |        |              |           |                        |                        |
| TESTED BY                      |        |              |           |                        |                        |
| TECHNOLOGIST                   |        | TECHNOLOGIST |           | OLD DRAWING            | DRAWING NUMBER         |
| NAME<br>Gutter expander square |        |              |           | Number of sheets       | W.15-WZHDI Sheet       |

Created: 20.04.2026 23:26:18

Technical changes reserved