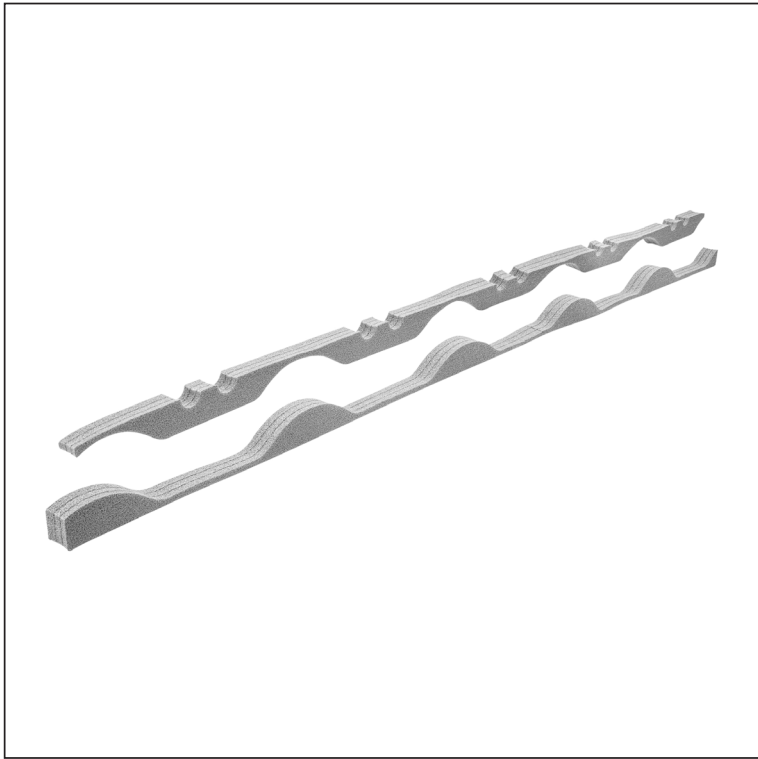
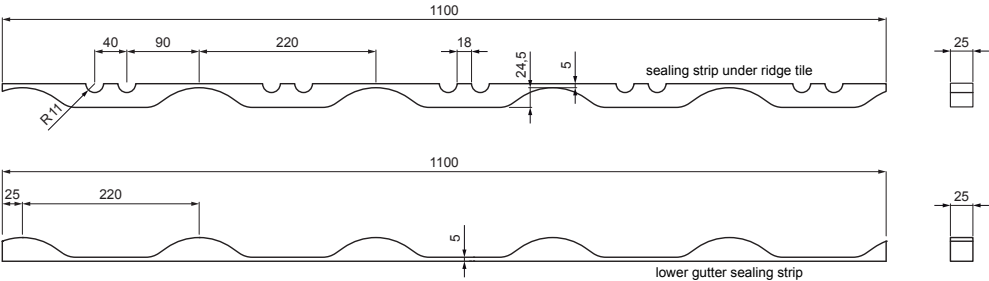


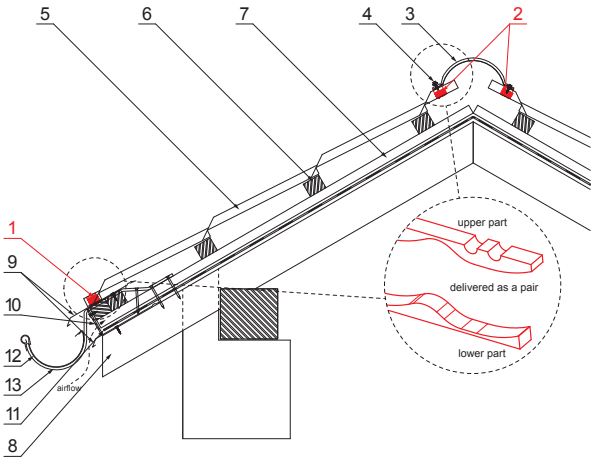
TECHNICAL SHEET

INFILL STRIP GRAY FOR METAL ROOFING UNI 2 TILES





UNI2-UTP



- DETAIL:**
- 1. gutter sealing strip
 - 2. sealing strip under ridge tile
 - 3. ridge cap
 - 4. farmer screw 4,8x20
 - 5. metal roofing
 - 6. roof battens
 - 7. battens
 - 8. rafter
 - 9. drip edge
 - 10. protective ventilation belt
 - 11. foil
 - 12. gutter half-round
 - 13. hook



PS Polyethylene – Dusty grey – RAL 7037

INDEX	CHANGE				DATE	SIGNATURE					
MATERIAL BRAND						W.C.	WEIGHT kg		SCALE		
SIZE, SEMI-FINISHED PRODUCTS											
AUXILIARY EQUIPMENT							STN STANDARD		SORTING NUMBER		
ELABORATED BY Ing. Kluska M.							NOTE		POSITION NUMBER		
TESTED BY											
TECHNOLOGIST						TECHNOLOGIST		OLD DRAWING		DRAWING NUMBER	
NAME						UNI2-UTP					
Infill strip gray for metal roofing UNI 2 tiles						Number of sheets					
						Sheet 					

Created: 19.01.2026 14:58:48

Technical changes reserved