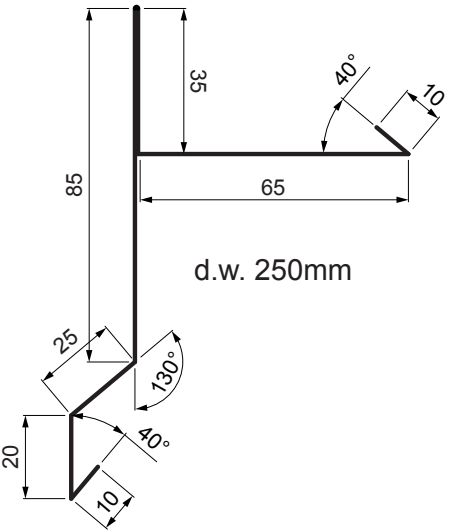


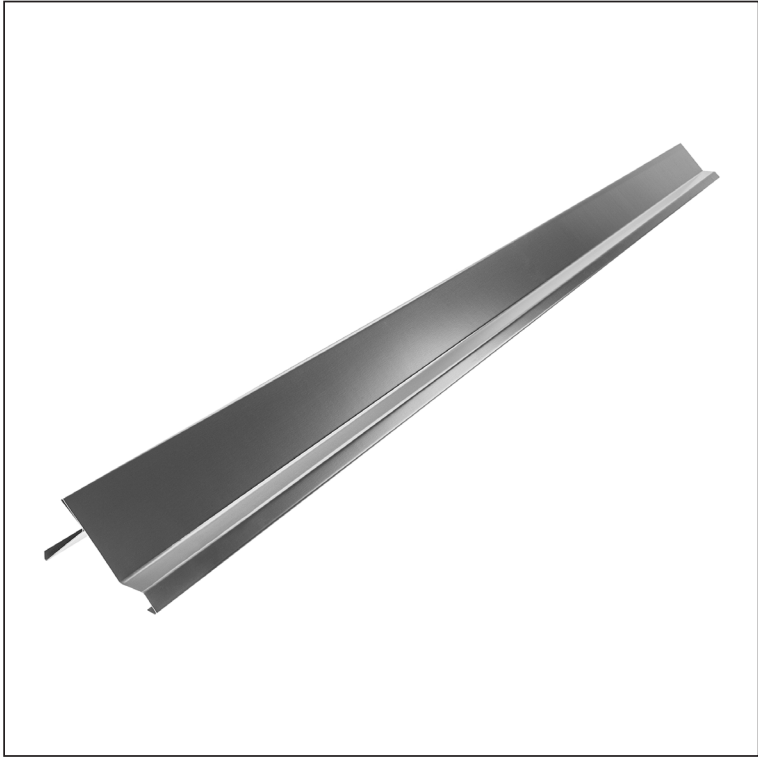
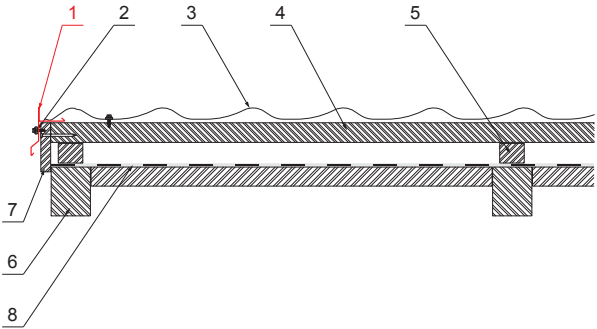
TECHNICAL SHEET

# BARGE FLASHING

UNI-PKLE



- DETAIL:**
- 1. barge flashing
  - 2. farmer screw 4,8x20
  - 3. metal roofing
  - 4. roof battens
  - 5. battens / air gap
  - 6. rafter
  - 7. gable plate
  - 8. foil / waterproofing insulation



**AN** Galvanized steel preprinted – Anthracite – RAL 7016

INDEX	CHANGE	DATE	SIGNATURE	<b>KJG</b> QUALITY ®	Scan code for 3D model	
MATERIAL BRAND			W.C.	WEIGHT kg	SCALE	
SIZE, SEMI-FINISHED PRODUCTS			STN STANDARD		SORTING NUMBER	
AUXILIARY EQUIPMENT			NOTE		POSITION NUMBER	
ELABORATED BY Ing. Kluska M.			OLD DRAWING		DRAWING NUMBER	
TESTED BY			TECHNOLOGIST		DRAFTING	
NAME			Barge flashing		UNI-PKLE	
			Number of sheets		Sheet	

Dimensions	
Nominal dimension [mm]	Length [m]
250	2,0
250	3,0