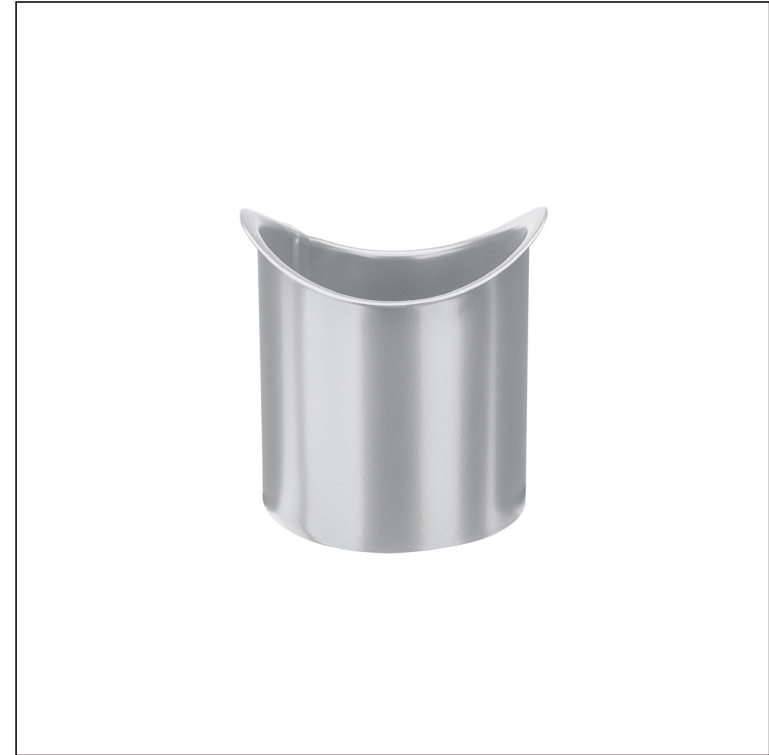
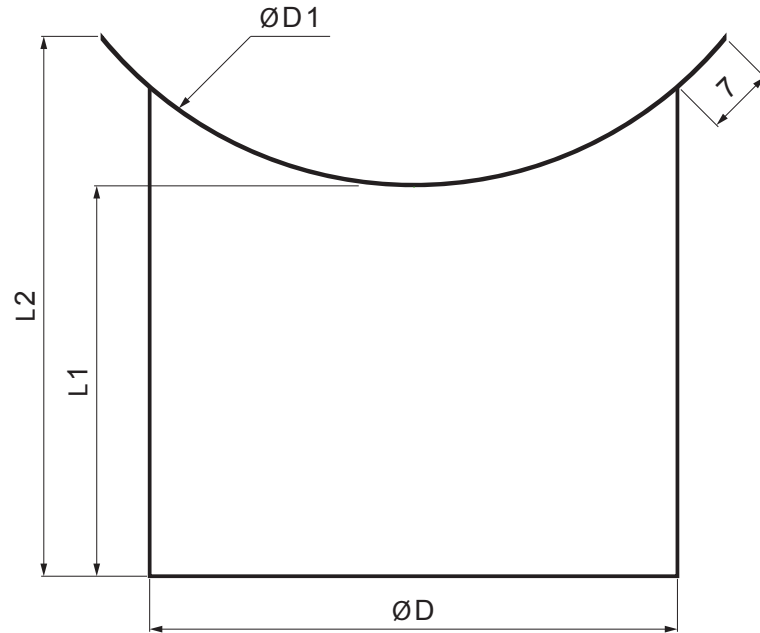


TECHNICAL SHEET




GUTTER OUTLET NECK

P-PHRD



BH Galvanized steel prepainted – White aluminum – RAL 9006

| Dimensions [mm] | | | | |
|-----------------|-------------|--------------|-----|-----|
| Nominal size | ØD | ØD1 | L 1 | L 2 |
| 80 | 80 | 105 | 80 | 105 |
| 100 | 100 | 153 | 80 | 153 |
| 120 | 120 | 153 | 80 | 153 |

| | | | | | |
|------------------------------|--------|------|--------------------|---|---|
| INDEX | CHANGE | DATE | SIGNATURE |  |  |
| | | | | | |
| MATERIAL BRAND | | | W.C. | WEIGHT kg | SCALE |
| SIZE, SEMI-FINISHED PRODUCTS | | | STN STANDARD | | SORTING NUMBER |
| AUXILIARY EQUIPMENT | | | NOTE | | POSITION NUMBER |
| ELABORATED BY Ing. Kluska M. | | | OLD DRAWING | | DRAWING NUMBER |
| TESTED BY | | | NAME | | |
| TECHNOLOGIST | | | Gutter outlet neck | | Number of sheets |
| | | | P-PHRD | | Sheet  |

Created: 07.06.2026 09:06:26

Technical changes reserved