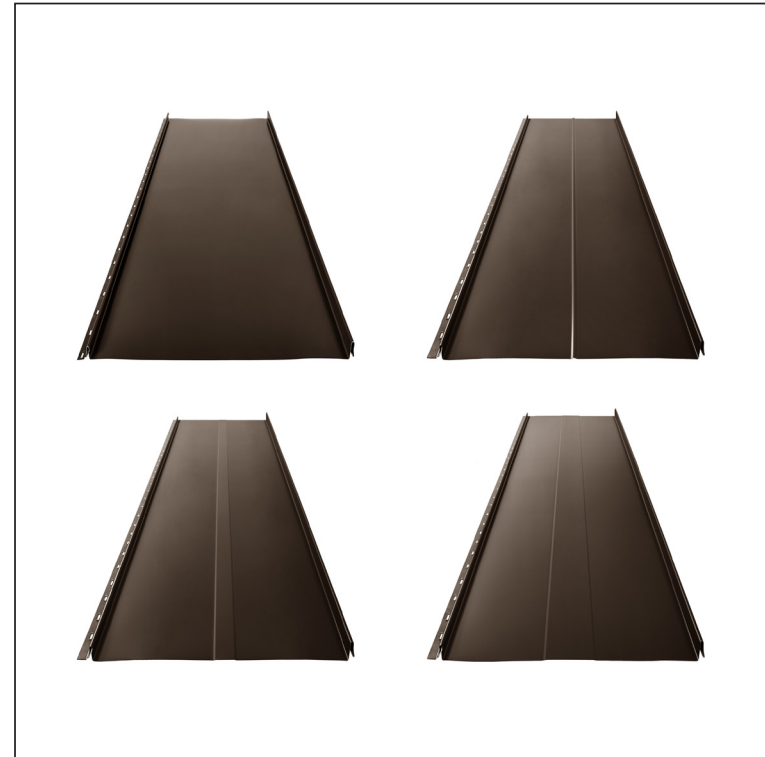
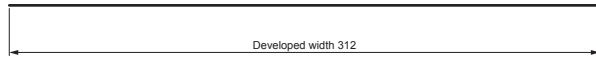
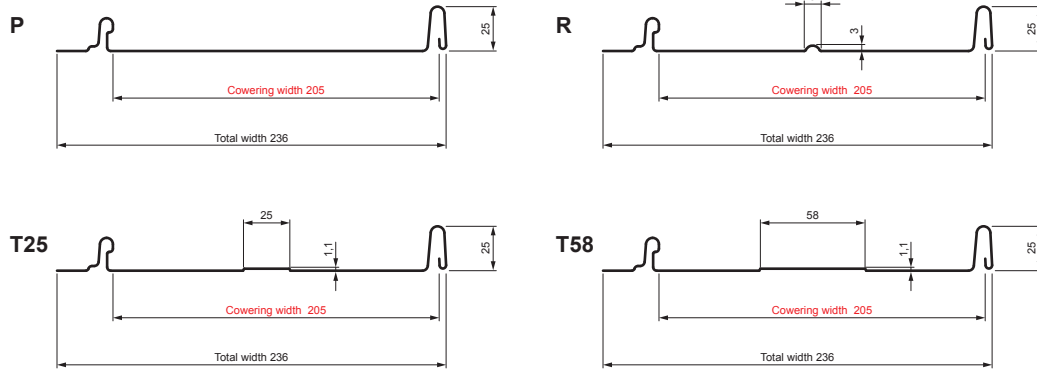


TECHNICAL SHEET

ROOFING PANEL CLICK 205 P, R, T25, T58

CLICK-205 L25

Variants 205



TM Galvanized steel prepainted – Testa di Moro – RAL 8028

Technical parameters [mm]	
Covering width	205
Total width	236
Developed width	312
Profile height	25
Metal sheet thickness	0,50
Roof covering length	min. 800 – max. 8000

INDEX	CHANGE	DATE	SIGNATURE	KJG QUALITY®	Scan code for 3D model
MATERIAL BRAND			W.C.	WEIGHT kg	SCALE
SIZE, SEMI-FINISHED PRODUCTS					
AUXILIARY EQUIPMENT				STN STANDARD	SORTING NUMBER
ELABORATED BY Ing. Kluska M.				NOTE	POSITION NUMBER
TESTED BY					
TECHNOLOGIST		TECHNOLOGIST		OLD DRAWING	DRAWING NUMBER
NAME			Roofing panel CLICK 205 P, R, T25, T58		
			Number of sheets	CLICK-205 L25	Sheet

Created: 20.04.2026 13:44:36

Technical changes reserved