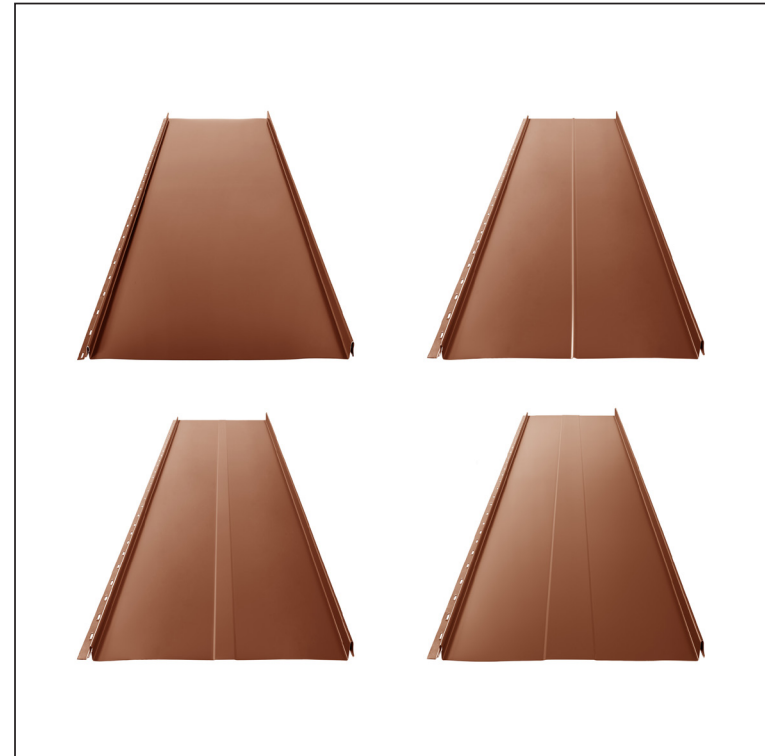
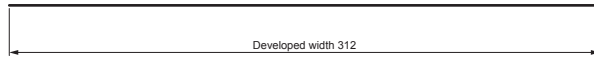
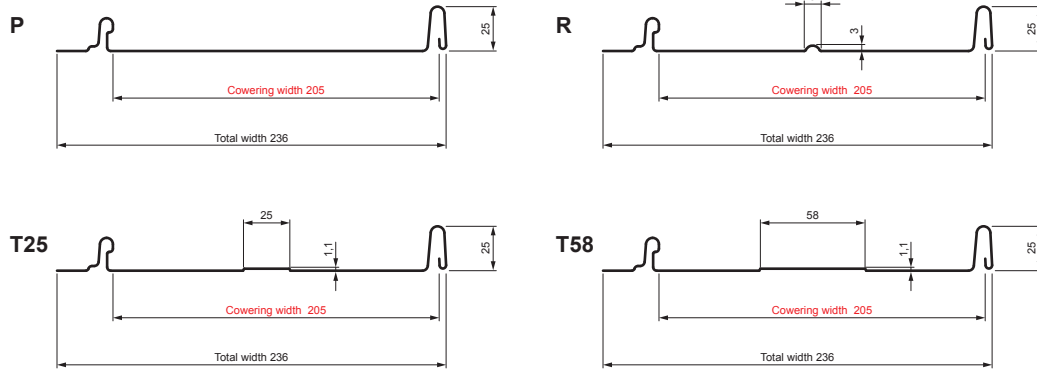


TECHNICAL SHEET

# ROOFING PANEL CLICK 205 P, R, T25, T58

# CLICK-205 L25

**Variants 205**



**MH** Galvanized steel prepainted – Copper brown – RAL 8004

Technical parameters [mm]	
Covering width	205
Total width	236
Developed width	312
Profile height	25
Metal sheet thickness	0,50
Roof covering length	min. 800 – max. 8000

INDEX	CHANGE	DATE	SIGNATURE	<b>KJG</b> QUALITY®	Scan code for 3D model
MATERIAL BRAND			W.C.	WEIGHT kg	SCALE
SIZE, SEMI-FINISHED PRODUCTS				STN STANDARD	SORTING NUMBER
AUXILIARY EQUIPMENT				NOTE	POSITION NUMBER
ELABORATED BY Ing. Kluska M.					
TESTED BY				OLD DRAWING	DRAWING NUMBER
TECHNOLOGIST			TECHNOLOGIST		
NAME			Roofing panel CLICK 205 P, R, T25, T58		Number of sheets
					CLICK-205 L25 Sheet

Created: 05.06.2026 21:00:57

Technical changes reserved