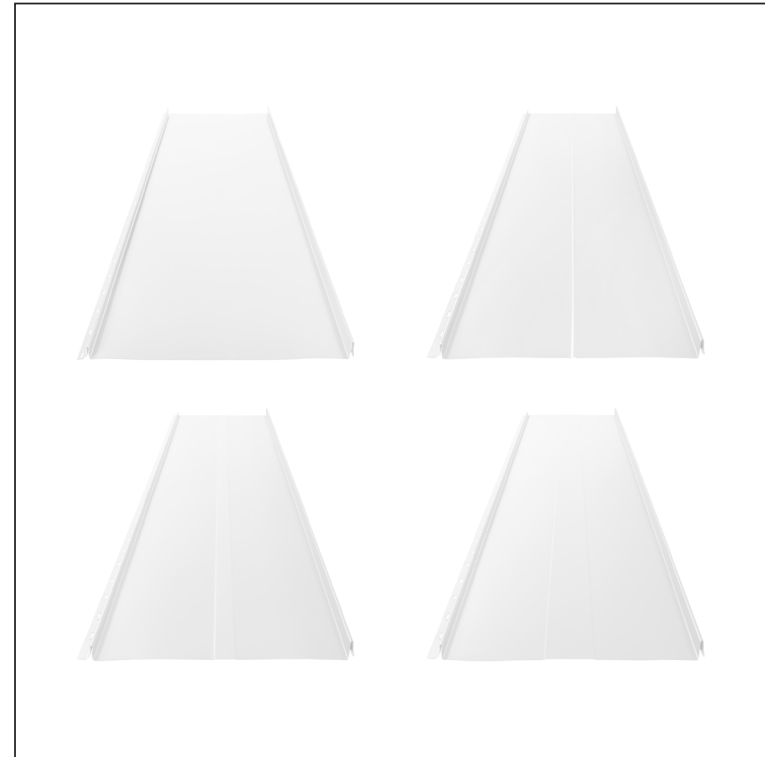
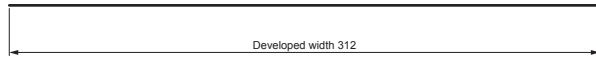
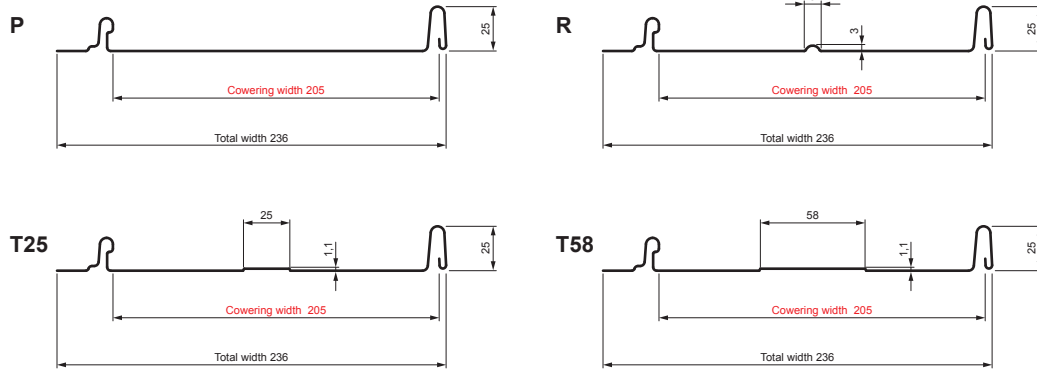


TECHNICAL SHEET

# ROOFING PANEL CLICK 205 P, R, T25, T58





# CLICK-205 L25

**Variants 205**



**B** Galvanized steel preprinted – Pure white – RAL 9010

Technical parameters [mm]	
Covering width	205
Total width	236
Developed width	312
Profile height	25
Metal sheet thickness	0,50
Roof covering length	min. 800 – max. 8000

INDEX	CHANGE	DATE	SIGNATURE	  	
MATERIAL BRAND			W.C.	WEIGHT kg	SCALE
SIZE, SEMI-FINISHED PRODUCTS					
AUXILIARY EQUIPMENT			STN STANDARD		SORTING NUMBER
ELABORATED BY Ing. Kluska M.			NOTE		POSITION NUMBER
TESTED BY					
TECHNOLOGIST		TECHNOLOGIST	OLD DRAWING		DRAWING NUMBER
NAME			Roofing panel CLICK 205 P, R, T25, T58		Number of sheets
					CLICK-205 L25
					Sheet 

Created: 04.06.2026 00:44:05

Technical changes reserved