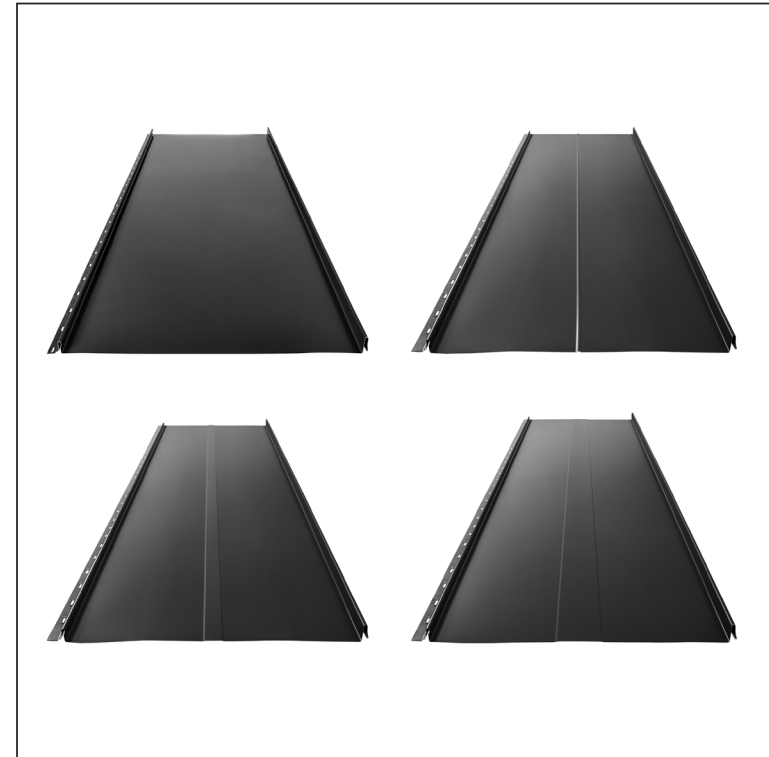
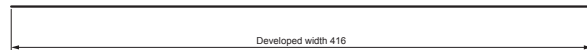
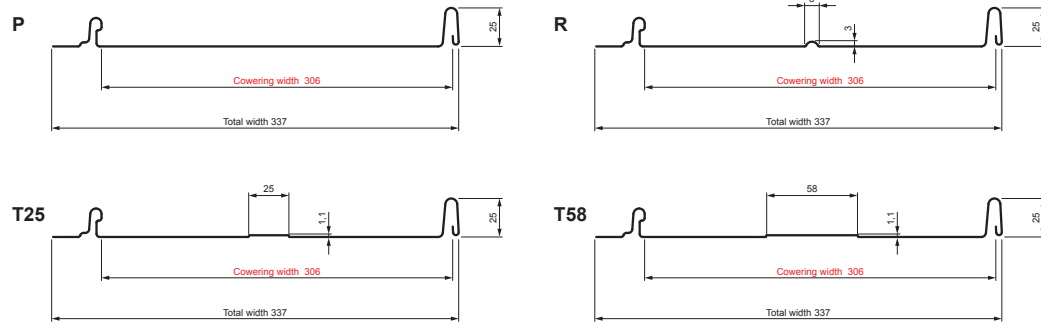


TECHNICAL SHEET

# ROOFING PANEL CLICK 306 P, R, T25, T58





# CLICK-306 L25

**Variants 306**



**IC** Galvanized steel preprinted – Intense black – RAL 9005

Technical parameters [mm]	
Covering width	306
Total width	337
Developed width	416
Profile height	25
Metal sheet thickness	0,50
Roof covering length	min. 800 – max. 8000

INDEX	CHANGE	DATE	SIGNATURE			
MATERIAL BRAND			W.C.	WEIGHT kg	SCALE	
SIZE, SEMI-FINISHED PRODUCTS			STN STANDARD		SORTING NUMBER	
AUXILIARY EQUIPMENT			NOTE		POSITION NUMBER	
ELABORATED BY Ing. Kluska M.			OLD DRAWING		DRAWING NUMBER	
TESTED BY			TECHNOLOGIST		DRAWING NUMBER	
NAME			Roofing panel CLICK 306 P, R, T25, T58		CLICK-306 L25	
			Number of sheets		Sheet 	

Created: 04.06.2026 02:36:35

Technical changes reserved