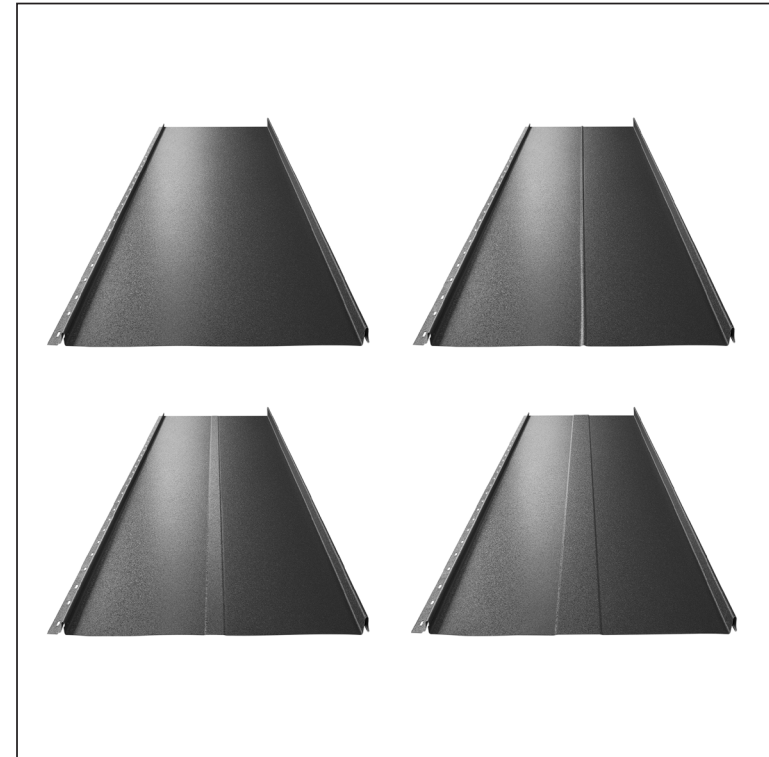
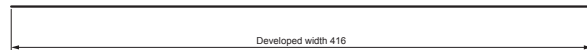
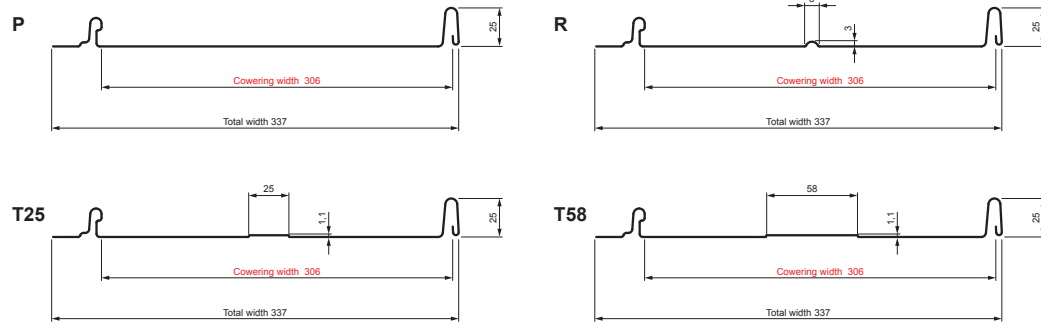


TECHNICAL SHEET

ROOFING PANEL CLICK 306 P, R, T25, T58

CLICK-306 L25

Variants 306



**ANM** Galvanized steel preprinted MATT – Anthracite MATT – RAL 7016

Technical parameters [mm]	
Covering width	306
Total width	337
Developed width	416
Profile height	25
Metal sheet thickness	0,50
Roof covering length	min. 800 – max. 8000

INDEX	CHANGE	DATE	SIGNATURE	<b>KJG</b> QUALITY®	Scan code for 3D model	
MATERIAL BRAND			W.C.	WEIGHT kg	SCALE	
SIZE, SEMI-FINISHED PRODUCTS			STN STANDARD		SORTING NUMBER	
AUXILIARY EQUIPMENT			NOTE		POSITION NUMBER	
ELABORATED BY Ing. Kluska M.			OLD DRAWING		DRAWING NUMBER	
TESTED BY			TECHNOLOGIST		DRAWING NUMBER	
NAME			Roofing panel CLICK 306 P, R, T25, T58		CLICK-306 L25	
			Number of sheets		Sheet	

Created: 06.06.2026 15:52:51

Technical changes reserved