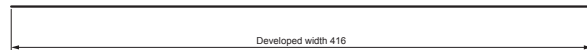
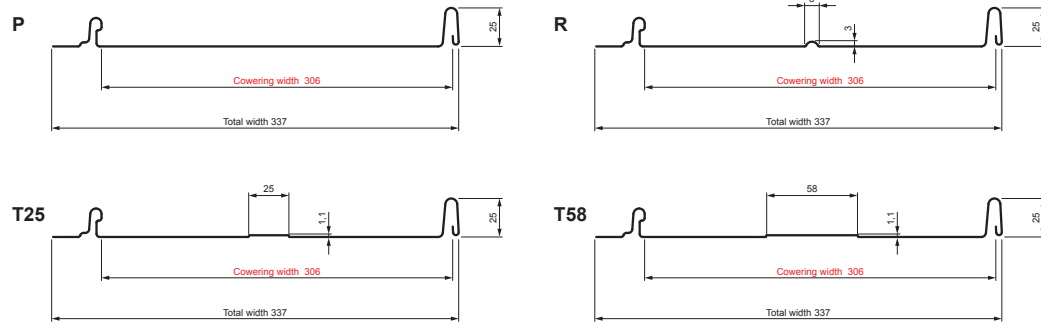


TECHNICAL SHEET

ROOFING PANEL CLICK 306 P, R, T25, T58

CLICK-306 L25

Variants 306



Galvanized steel prepainted MATT – Testa di Moro MATT – RAL 8028

Technical parameters [mm]	
Covering width	306
Total width	337
Developed width	416
Profile height	25
Metal sheet thickness	0,50
Roof covering length	min. 800 – max. 8000

INDEX	CHANGE	DATE	SIGNATURE		
MATERIAL BRAND			W.C.	WEIGHT kg	SCALE
SIZE, SEMI-FINISHED PRODUCTS			STN STANDARD		SORTING NUMBER
AUXILIARY EQUIPMENT			NOTE		POSITION NUMBER
ELABORATED BY Ing. Kluska M.			OLD DRAWING		DRAWING NUMBER
TESTED BY			TECHNOLOGIST		
NAME			Roofing panel CLICK 306 P, R, T25, T58		Number of sheets
					CLICK-306 L25
					Sheet

Created: 06.06.2026 17:36:29

Technical changes reserved