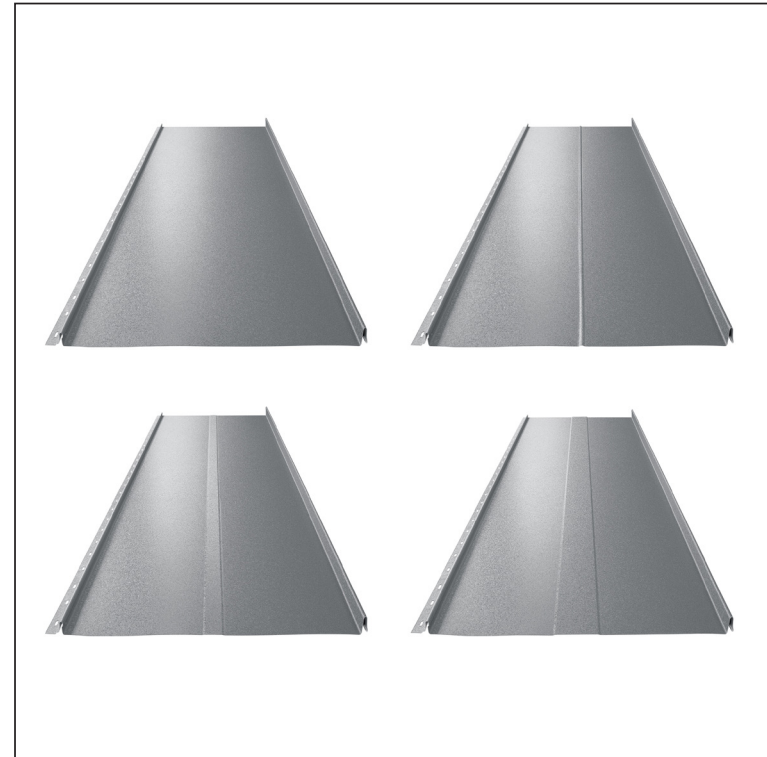
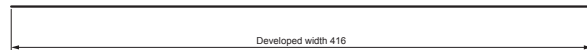
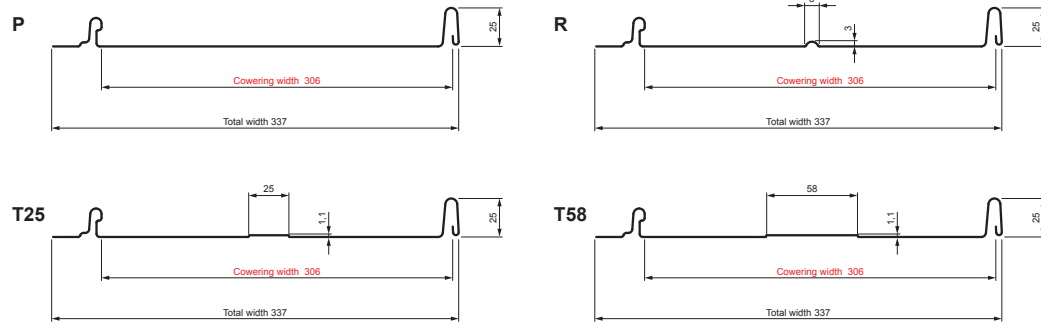


TECHNICAL SHEET

ROOFING PANEL CLICK 306 P, R, T25, T58

CLICK-306 L25

Variants 306



PSM Galvanized steel prepainted MATT – Dusty grey MATT – RAL 7037

Technical parameters [mm]	
Covering width	306
Total width	337
Developed width	416
Profile height	25
Metal sheet thickness	0,50
Roof covering length	min. 800 – max. 8000

INDEX	CHANGE	DATE	SIGNATURE	KJG QUALITY®	Scan code for 3D model
MATERIAL BRAND			W.C.	WEIGHT kg	SCALE
SIZE, SEMI-FINISHED PRODUCTS					
AUXILIARY EQUIPMENT				STN STANDARD	SORTING NUMBER
ELABORATED BY Ing. Kluska M.				NOTE	POSITION NUMBER
TESTED BY					
TECHNOLOGIST		TECHNOLOGIST		OLD DRAWING	DRAWING NUMBER
NAME			Roofing panel CLICK 306 P, R, T25, T58		Number of sheets
					CLICK-306 L25
					Sheet

Created: 19.04.2026 23:25:11

Technical changes reserved