

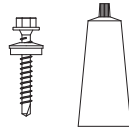
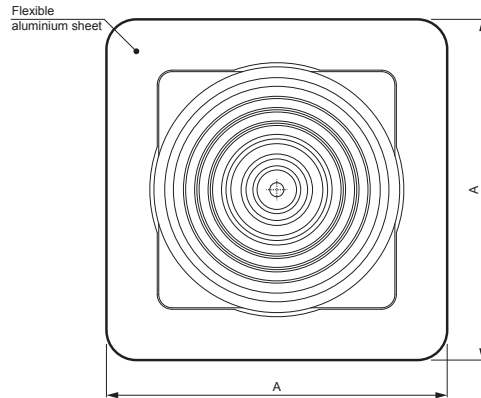
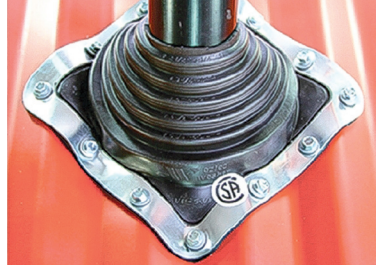
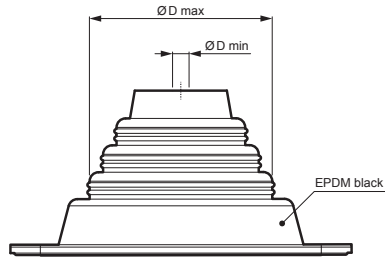
TECHNICAL SHEET

# PIPE/ROOF FLASHING MASTER FLASH

# SD-MANZETA MF

CUT THE SLEEVE FOR THE REQUIRED PIPE DIAMETER

Application:






**PACKAGE CONTENTS:**  
 - sleeve  
 - farmer screw  
 - colourless silicone  
 - instructions



Dimensions [mm]				
Nominal dimension	Transition piece size ØD min – ØD max	Base dimensions A	Farmer screw / number of pcs	Silicone
MF1	Ø6 – Ø70	114 x 114	Ø4,8 x 25 / 8	40 ml
MF2	Ø22 – Ø101	152 x 152	Ø4,8 x 28 / 12	40 ml
MF3	Ø6 – Ø146	203 x 203	Ø4,8 x 28 / 16	40 ml
MF4	Ø70 – Ø177	254 x 254	Ø4,8 x 28 / 16	40 ml
MF5	Ø101 – Ø209	280 x 280	Ø4,8 x 28 / 20	80 ml
MF6	Ø121 – Ø254	305 x 305	Ø4,8 x 28 / 20	80 ml
MF7	Ø140 – Ø292	356 x 356	Ø4,8 x 35 / 24	80 ml
MF8	Ø171 – Ø343	432 x 432	Ø4,8 x 35 / 28	80 ml + 40 ml
MF9	Ø241 – Ø520	635 x 635	Ø4,8 x 28 / 44	80 ml + 40 ml

**IC** EPDM – Intense black – RAL 9005

INDEX CHANGE	DATE	SIGNATURE	W.C.	WEIGHT kg	SCALE			
SIZE, SEMI-FINISHED PRODUCTS			NOTE		POSITION NUMBER			
AUXILIARY EQUIPMENT			TECHNOLOGIST		DRAWING NUMBER			
ELABORATED BY Ing. Kluska M.			NAME		SD-MANZETA MF			
TESTED BY			Pipe/roof flashing MASTER FLASH		Number of sheets		Sheet	
TECHNOLOGIST								

Created: 05.06.2026 14:24:23

Technical changes reserved