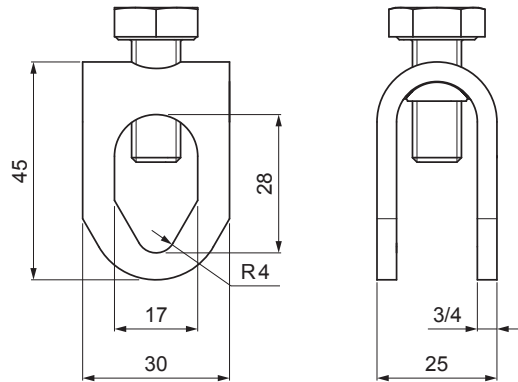


TECHNICAL SHEET

STAINLESS STEEL CLAMP OF BAR FOR 8–10/16 mm DIAMETER

SD-BS DEHN SKM 10x25



APPLICATION:



DESCRIPTION:

- longitudinal connection is suitable for all materials
- transverse connection is only available for FeZn and stainless steel ($\varnothing 8 - \varnothing 10\text{mm}$)

POSSIBLE APPLICATIONS:



N Stainless steel

Technical parameter	
Application	clamp to rods
Diameter of conductor / bar	$\varnothing 8 - \varnothing 10 \text{ mm} / \varnothing 16 \text{ mm}$
Screw / material	M10x25 mm / Stainless steel
Lightning current load capacity	10/350 μs
Weight	0,070 kg / pcs

INDEX	CHANGE	DATE	SIGNATURE	KJG QUALITY ©	
MATERIAL BRAND			W.C.	WEIGHT kg	SCALE
SIZE, SEMI-FINISHED PRODUCTS				STN STANDARD	SORTING NUMBER
AUXILIARY EQUIPMENT				NOTE	POSITION NUMBER
ELABORATED BY Ing. Kluska M.					
TESTED BY					
TECHNOLOGIST		TECHNOLOGIST		OLD DRAWING	DRAWING NUMBER
NAME			Stainless steel clamp of bar for 8–10/16 mm diameter		SD-BS DEHN SKM 10x25 Number of sheets Sheet

Created: 05.06.2026 17:58:03

Technical changes reserved