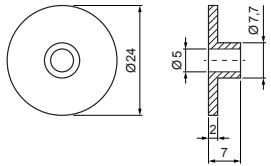


TECHNICAL SHEET

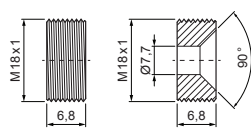
STAINLESS STEEL UNI PLATFORM TO ATTACH OB M 10

P-POB-HN PLAT M10

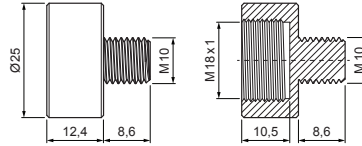
Rubber pad



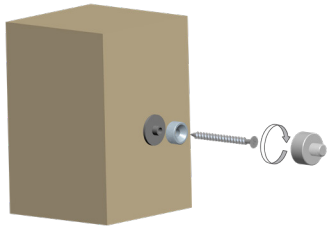
Bottom part



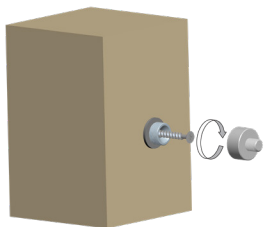
Top part



ASSEMBLY PROCEDURE:



1 rubber pad, bottom part, wood screw, platform top part



2 fasten the platform bottom part with a pad using the wood screw



3 screw the upper part onto the bottom part and screw the sleeve on

* The screw is not included in the package

N Stainless steel

INDEX	CHANGE	DATE	SIGNATURE	KJG QUALITY®	Scan code for 3D model
MATERIAL BRAND			W.C.	WEIGHT kg	SCALE
SIZE, SEMI-FINISHED PRODUCTS				STN STANDARD	SORTING NUMBER
AUXILIARY EQUIPMENT				NOTE	POSITION NUMBER
ELABORATED BY Ing. Kluska M.				OLD DRAWING	DRAWING NUMBER
TESTED BY			TECHNOLOGIST		
NAME			Stainless steel uni platform to attach OB M10		P-POB-HN PLAT M10
			Number of sheets		Sheet

Created: 05.06.2026 06:08:41

Technical changes reserved