

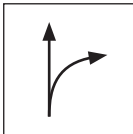
TECHNICAL SHEET

# CIRCULAR SHEARS FOR SHEET METAL R

# KNS-STUS 267501 KNS-STUS 267502

**PROPERTIES:**

- special sheet metal shears for straight and curved cuts
- version – right
- inductively hardened blades
- hardness: 60-62 HRC



**RIGHT SHEARS:**


designed for cutting-out of the right roundness  
(arch from left side to right side)






 Carbon steel C60

**DETAIL:** Right version



Technical parameter		
Model	KNS-STUS 267501	KNS-STUS 267502
Nominal dimension	250 mm	300 mm
Weight	420 g	560 g
 Packaging	5 pcs	5 pcs

INDEX	CHANGE	DATE	SIGNATURE	 	
MATERIAL BRAND			W.C.	WEIGHT kg	SCALE
SIZE, SEMI-FINISHED PRODUCTS			STN STANDARD		SORTING NUMBER
AUXILIARY EQUIPMENT			NOTE		POSITION NUMBER
ELABORATED BY Ing. Kluska M.					
TESTED BY					
TECHNOLOGIST		TECHNOLOGIST	OLD DRAWING		DRAWING NUMBER
NAME			Circular shears for sheet metal R		KNS-STUS 267501 KNS-STUS 267502
			Number of sheets		Sheet 

Created: 04.06.2026 04:46:06

Technical changes reserved