

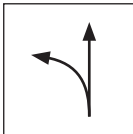
TECHNICAL SHEET

CIRCULAR SHEARS FOR SHEET METAL L

KNS-STUS 267601 KNS-STUS 267602

PROPERTIES:

- special sheet metal shears for straight and curved cuts
- version – left
- inductively hardened blades
- hardness: 60-62 HRC




LEFT SHEARS:



designed for cutting-out of the left roundness
(arch from right side to left side)

DETAIL: Left version



 Carbon steel C60

Technical parameter		
Model	KNS-STUS 267601	KNS-STUS 267602
Nominal dimension	250 mm	300 mm
Weight	420 g	560 g
 Packaging	5 pcs	5 pcs

INDEX	CHANGE	DATE	SIGNATURE	 	
MATERIAL BRAND			W.C.	WEIGHT kg	SCALE
SIZE, SEMI-FINISHED PRODUCTS				STN STANDARD	SORTING NUMBER
AUXILIARY EQUIPMENT				NOTE	POSITION NUMBER
ELABORATED BY Ing. Kluska M.					
TESTED BY					
TECHNOLOGIST		TECHNOLOGIST		OLD DRAWING	DRAWING NUMBER
NAME Circular shears for sheet metal L				Number of sheets	KNS-STUS 267601 KNS-STUS 267602

Created: 05.06.2026 04:38:28

Technical changes reserved