

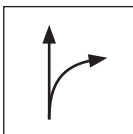
TECHNICAL SHEET

SHEET METAL SHEARS COMBI R

KNS-STUS 270001

PROPERTIES:

- combined sheet metal shears suitable for creation of curved and long uninterrupted cuts
- version – right
- inductively hardened blades
- hardness: 60-62 HRC
- red handle, lacquered






RIGHT SHEARS:

designed for cutting-out of the right roundness (arch from left side to right side)

DETAIL: Right version




High-alloy tool steel

INDEX	CHANGE	DATE	SIGNATURE	 	
MATERIAL BRAND			W.C.	WEIGHT kg	SCALE
SIZE, SEMI-FINISHED PRODUCTS					
AUXILIARY EQUIPMENT			STN STANDARD		SORTING NUMBER
ELABORATED BY Ing. Kluska M.			NOTE		POSITION NUMBER
TESTED BY					
TECHNOLOGIST		TECHNOLOGIST	OLD DRAWING		DRAWING NUMBER
NAME			KNS-STUS 270001		
Sheet metal shears COMBI R			Number of sheets		Sheet 

Created: 04.12.2025 10:34:34

Technical changes reserved

Technical parameter	
Model	KNS-STUS 270001
Nominal dimension	280 mm
Weight	600 g
 Packaging	5 pcs