

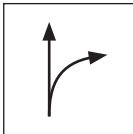
TECHNICAL SHEET

SHEET METAL SHEARS COMBI R PVC

KNS-STUS 270011

PROPERTIES:

- combined sheet metal shears suitable for creation of curved and long uninterrupted cuts
- version – right
- inductively hardened blades
- hardness: 60-62 HRC
- handle coated with red plastic




RIGHT SHEARS:




designed for cutting-out of the right roundness (arch from left side to right side)

DETAIL: Right version



 High-alloy tool steel

Technical parameter	
Model	KNS-STUS 270011
Nominal dimension	280 mm
Weight	600 g
 Packaging	5 pcs

INDEX	CHANGE	DATE	SIGNATURE	 	
MATERIAL BRAND			W.C.	WEIGHT kg	SCALE
SIZE, SEMI-FINISHED PRODUCTS				STN STANDARD	SORTING NUMBER
AUXILIARY EQUIPMENT				NOTE	POSITION NUMBER
ELABORATED BY Ing. Kluska M.					
TESTED BY				OLD DRAWING	DRAWING NUMBER
TECHNOLOGIST		TECHNOLOGIST			
NAME			KNS-STUS 270011		
Sheet metal shears COMBI R PVC			Number of sheets		Sheet 

Created: 20.04.2026 08:38:55

Technical changes reserved