

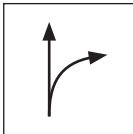
TECHNICAL SHEET

SHEET METAL SHEARS GEARED R

KNS-STUS 270101

PROPERTIES:

- shears for direct continuous cuts and precise curved cuts
- less effort to cut
- version – right
- handle coated with red plastic with a safety handle
- hardness: 60-62 HRC



RIGHT SHEARS:

designed for cutting-out of the right roundness
(arch from left side to right side)



DETAIL: Right version



Special steel

Technical parameter	
Model	KNS-STUS 270101
Nominal dimension	260 mm
Weight	540 g
📦 Packaging	5 pcs

INDEX	CHANGE	DATE	SIGNATURE		
MATERIAL BRAND			W.C.	WEIGHT kg	SCALE
SIZE, SEMI-FINISHED PRODUCTS				STN STANDARD	SORTING NUMBER
AUXILIARY EQUIPMENT				NOTE	POSITION NUMBER
ELABORATED BY Ing. Kluska M.					
TESTED BY					
TECHNOLOGIST		TECHNOLOGIST		OLD DRAWING	DRAWING NUMBER
NAME				KNS-STUS 270101	
Sheet metal shears geared R				Number of sheets	Sheet

Created: 04.06.2026 03:49:29

Technical changes reserved