

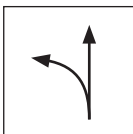
TECHNICAL SHEET

SHEET METAL SHEARS COMBI L PVC

KNS-STUS 270511

PROPERTIES:

- combined sheet metal shears suitable for creation of curved and long uninterrupted cuts
- version – left
- inductively hardened blades
- hardness: 60-62 HRC
- handle coated with red plastic






LEFT SHEARS:

designed for cutting-out of the left roundness (arch from right side to left side)

DETAIL: Left version




High-alloy tool steel

INDEX	CHANGE	DATE	SIGNATURE	 	
MATERIAL BRAND			W.C.	WEIGHT kg	SCALE
SIZE, SEMI-FINISHED PRODUCTS					
AUXILIARY EQUIPMENT			STN STANDARD		SORTING NUMBER
ELABORATED BY Ing. Kluska M.			NOTE		POSITION NUMBER
TESTED BY					
TECHNOLOGIST		TECHNOLOGIST	OLD DRAWING		DRAWING NUMBER
NAME			KNS-STUS 270511		
Sheet metal shears COMBI L PVC			Number of sheets		Sheet 

Created: 19.01.2026 19:56:07

Technical changes reserved

Technical parameter	
Model	KNS-STUS 270511
Nominal dimension	280 mm
Weight	600 g
 Packaging	5 pcs