

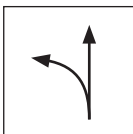
TECHNICAL SHEET

SHEET METAL SHEARS GEARED L

KNS-STUS 270601

PROPERTIES:

- shears for direct continuous cuts and precise curved cuts
- less effort to cut
- version – left
- handle coated with red plastic with a safety handle
- hardness: 60-62 HRC






LEFT SHEARS:

designed for cutting-out of the left roundness
(arch from right side to left side)

DATAIL: Left version




Special steel

INDEX	CHANGE	DATE	SIGNATURE	 	
MATERIAL BRAND			W.C.	WEIGHT kg	SCALE
SIZE, SEMI-FINISHED PRODUCTS					
AUXILIARY EQUIPMENT			STN STANDARD		SORTING NUMBER
ELABORATED BY Ing. Kluska M.			NOTE		POSITION NUMBER
TESTED BY					
TECHNOLOGIST		TECHNOLOGIST	OLD DRAWING		DRAWING NUMBER
NAME			Sheet metal shears geared L Number of sheets KNS-STUS 270601 Sheet 		

Created: 19.01.2026 19:50:48

Technical changes reserved

Technical parameter	
Model	KNS-STUS 270601
Nominal dimension	260 mm
Weight	540 g
 Packaging	5 pcs