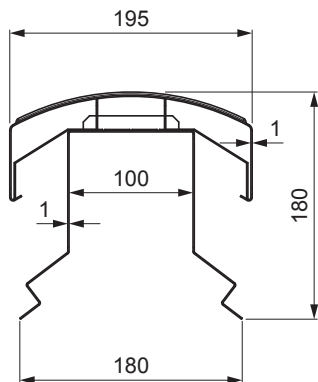
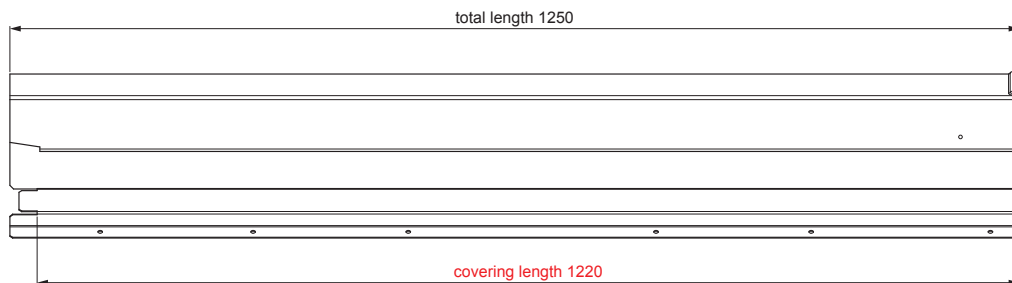


TECHNICAL SHEET

RIDGE VENT UNI I=1,22 m



POSSIBLE APPLICATIONS:

- trapezoidal profile TR roof
- roof covering KJG FALZ
- roof covering KJG CLICK system
- roof covering KJG rhomboid roof tile

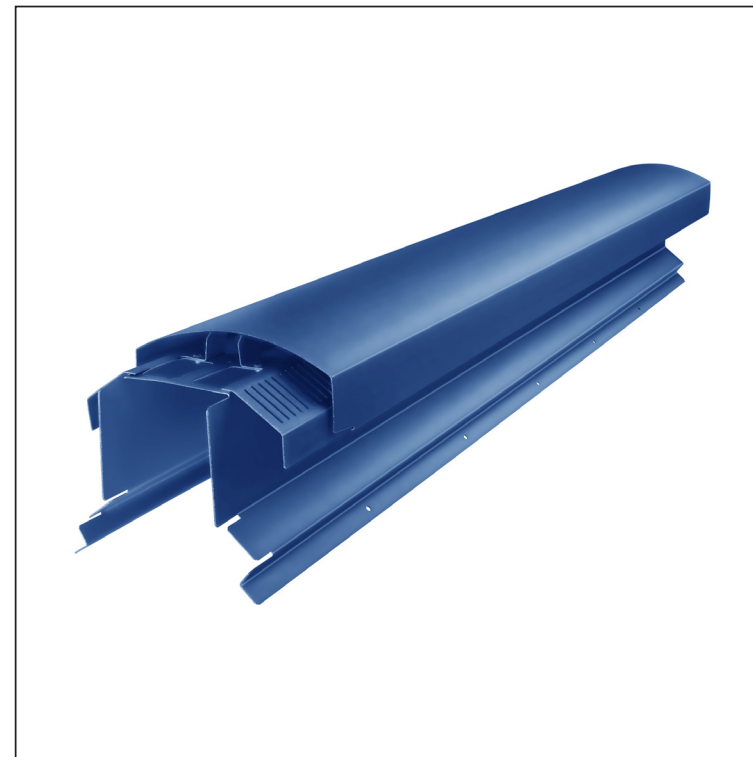
ADVANTAGES:

- universal usability
- self-supporting labyrinth ventilation opening
- removable cover
- large ventilation cross-section of 300 cm²
- covering length 1 220 mm
- material thickness 1 mm
- practical joining system

DETAIL:





FALZ-PHREVET



Material: Aluminium – Natur

Color : Galvanized steel prepainted – Gentian blue – RAL 5010

INDEX	CHANGE	DATE	SIGNATURE	 	
MATERIAL BRAND	SIZE, SEMI-FINISHED PRODUCTS	W.C.	WEIGHT kg		
AUXILIARY EQUIPMENT	ELABORATED BY Ing. Kluska M.	STN STANDARD	NOTE	SCALE	SORTING NUMBER
TESTED BY	TECHNOLOGIST	OLD DRAWING	DRAWING NUMBER	POSITION NUMBER	
NAME			Ridge vent UNI I=1,22 m		
			Number of sheets		
			FALZ-PHREVET		
			Sheet		

Created: 20.01.2026 06:59:44

Technical changes reserved