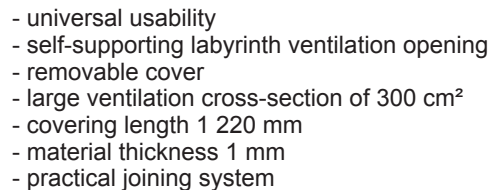
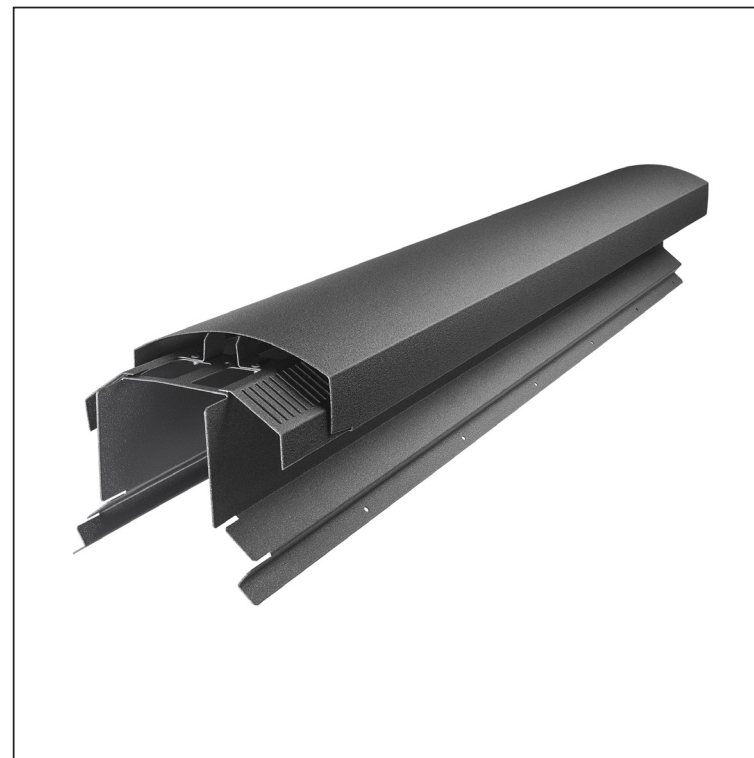


RIDGE VENT UNI I=1,22 m





## A black, curved metal component, likely a part of a vehicle's suspension or chassis, shown against a white background. The component has a wide, flat top surface that tapers down to a narrower section with a series of vertical slots or louvers. Below this, there are two large, rectangular cutouts. The bottom of the component features two long, angled, downward-pointing flaps or arms, suggesting it might be a brake caliper bracket or a similar mechanical part.

FALZ-W.15HREVET



Aluminium prepainted W.15 – Anthracite W.15 – RAL 7016

INDEX	CHANGE		DATE	SIGNATURE	<div>KJG</div> <div>QUALITY®</div>	<div></div> <div>Scan code for 3D model</div>	<div></div>
MATERIAL BRAND				W.C.	WEIGHT kg	SCALE	
SIZE. SEMI-FINISHED PRODUCTS							
AUXILIARY EQUIPMENT					STN STANDARD	SORTING NUMBER	
ELABORATED BY		Ing. Kluska M.			NOTE	POSITION NUMBER	
TESTED BY							
TECHNOLOGIST		TECHNOLOGIST			OLD DRAWING	DRAWING NUMBER	
NAME							
Ridge vent UNI I=1,22 m					Number of sheets	FALZ-W.15HREVET	
						Sheet	

Technical changes reserved