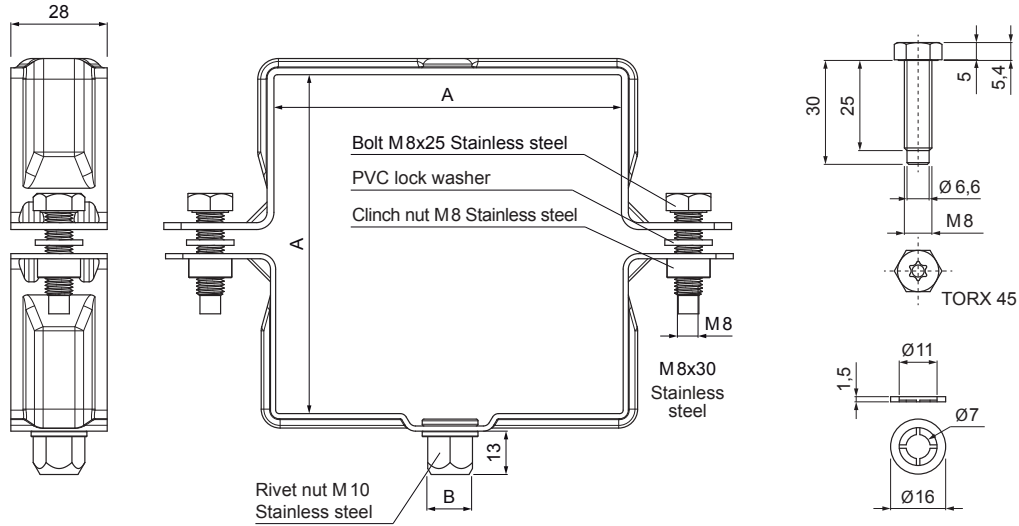


TECHNICAL SHEET

# DOWNPIPE BRACKET SQUARE M 10

# W.15H-WOBH



**ANM** Aluminium pre-painted W.15 – Anthracite W.15 – RAL 7016

|                              |        |              |                              |                        |                        |
|------------------------------|--------|--------------|------------------------------|------------------------|------------------------|
| INDEX                        | CHANGE | DATE         | SIGNATURE                    | <b>KJG</b><br>QUALITY® | Scan code for 3D model |
|                              |        |              |                              |                        |                        |
| MATERIAL BRAND               |        |              | W.C.                         | WEIGHT kg              | SCALE                  |
| SIZE, SEMI-FINISHED PRODUCTS |        |              |                              | STN STANDARD           | SORTING NUMBER         |
| AUXILIARY EQUIPMENT          |        |              |                              | NOTE                   | POSITION NUMBER        |
| ELABORATED BY Ing. Kluska M. |        |              |                              |                        |                        |
| TESTED BY                    |        |              |                              |                        |                        |
| TECHNOLOGIST                 |        | TECHNOLOGIST |                              | OLD DRAWING            | DRAWING NUMBER         |
| NAME                         |        |              | Downpipe bracket square M 10 |                        |                        |
|                              |        |              | Number of sheets             | W.15H-WOBH             | Sheet                  |

Created: 04.06.2026 16:05:35

Technical changes reserved

| Dimensions [mm] |           |    |
|-----------------|-----------|----|
| Nominal size    | AxA       | B  |
| 80/80           | 80 x 80   | 13 |
| 100/100         | 100 x 100 | 13 |
| 120/120         | 120 x 120 | 13 |