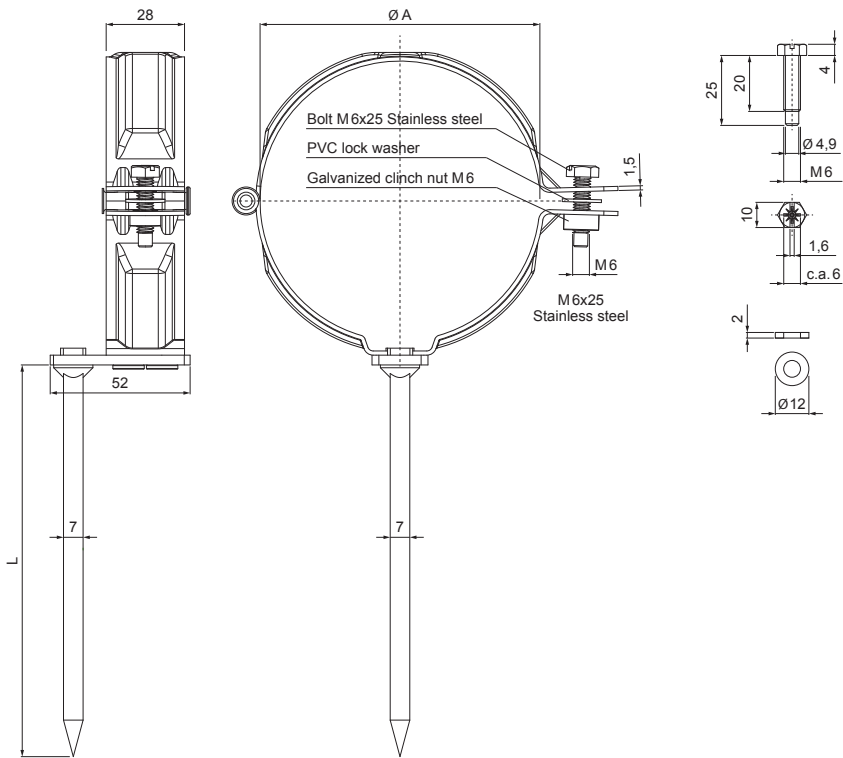


TECHNICAL SHEET

DOWNPIPE BRACKET WITH PIN 200 MM

P-POD



Galvanized steel prepainted – Testa di Moro – RAL 8028

INDEX	CHANGE	DATE	SIGNATURE	KJG QUALITY®	Scan code for 3D model	
MATERIAL BRAND				W.C.	WEIGHT kg	SCALE
SIZE, SEMI-FINISHED PRODUCTS					STN STANDARD	SORTING NUMBER
AUXILIARY EQUIPMENT					NOTE	POSITION NUMBER
ELABORATED BY Ing. Kluska M.					OLD DRAWING	DRAWING NUMBER
TESTED BY						
TECHNOLOGIST				TECHNOLOGIST		
NAME				Downpipe bracket with pin 200 mm		
				Number of sheets		
				P-POD		
				Sheet		

Created: 04.12.2025 08:06:22

Technical changes reserved

Dimensions [mm]		
Nominal size	Ø A	L
80	80	200
100	100	200
120	120	200