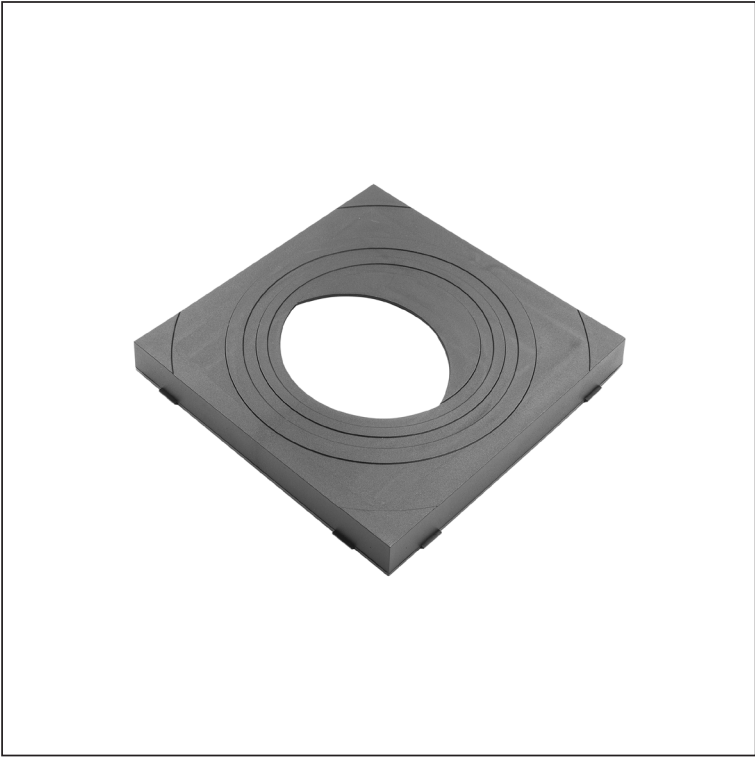
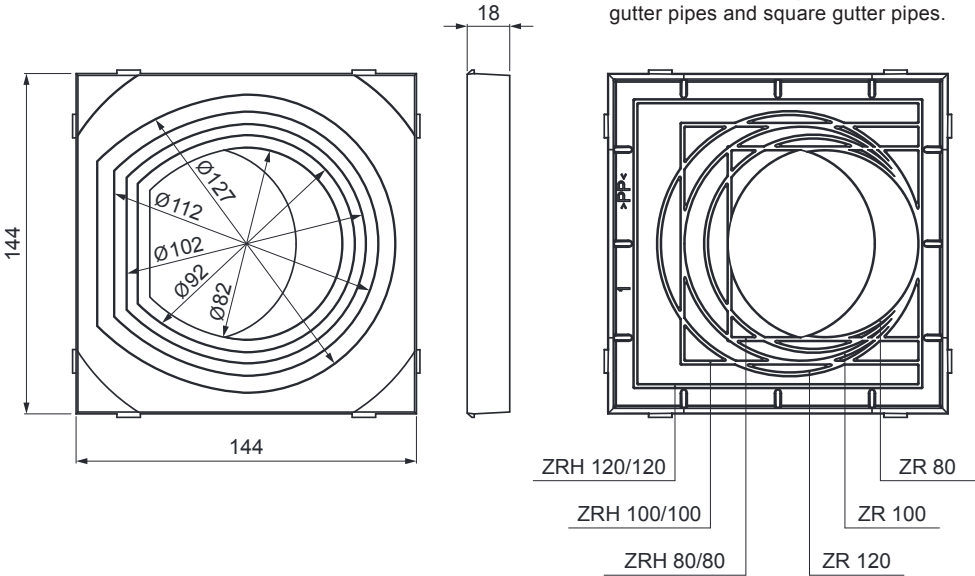


TECHNICAL SHEET

# UNIVER. DOWNPIPE ENTRY COV.

SD-KV AGV911



**IC** PVC – Intense black – RAL 9005

INDEX	CHANGE	DATE	SIGNATURE	<b>KJG</b> QUALITY®	Scan code for 3D model	
MATERIAL BRAND			W.C.	WEIGHT kg	SCALE	
SIZE, SEMI-FINISHED PRODUCTS			STN STANDARD		SORTING NUMBER	
AUXILIARY EQUIPMENT			NOTE		POSITION NUMBER	
ELABORATED BY Ing. Kluska M.			OLD DRAWING		DRAWING NUMBER	
TESTED BY			DRAWING NUMBER			
TECHNOLOGIST			DRAWING NUMBER			
NAME			Univer. downpipe entry cov.		Number of sheets	
			SD-KV AGV911		Sheet	

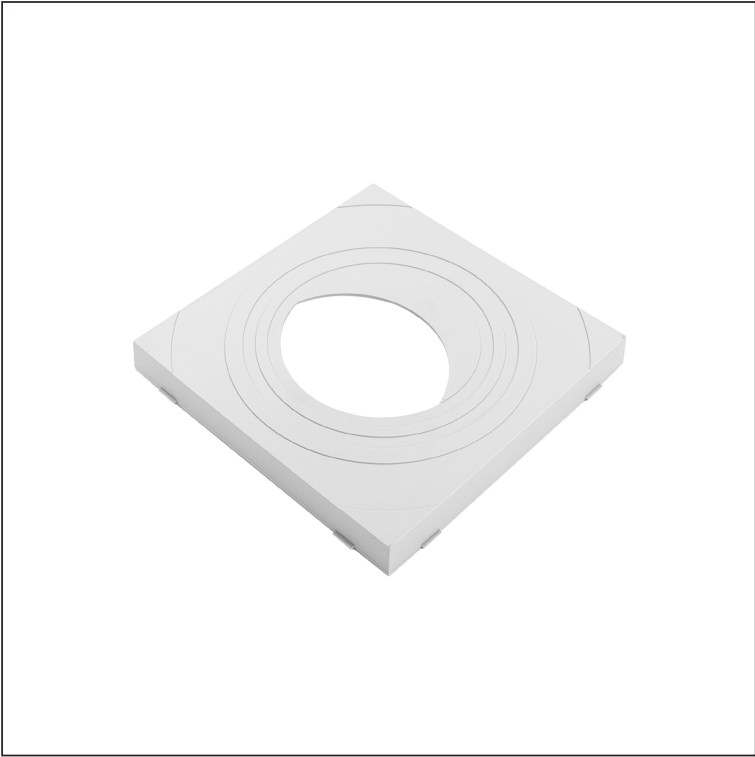
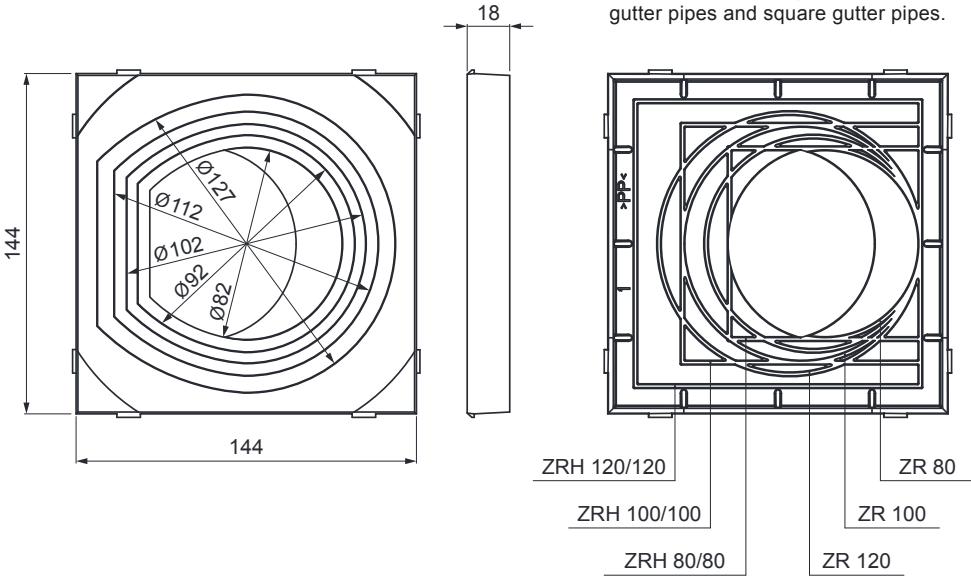
Created: 04.12.2025 08:23:31

Technical changes reserved

TECHNICAL SHEET

# UNIVER. DOWNPIPE ENTRY COV.

SD-KV AGV911



**PS** PVC – Dusty grey – RAL 7037

INDEX	CHANGE	DATE	SIGNATURE	<b>KJG</b> QUALITY®	Scan code for 3D model	
MATERIAL BRAND			W.C.	WEIGHT kg	SCALE	
SIZE, SEMI-FINISHED PRODUCTS			STN STANDARD		SORTING NUMBER	
AUXILIARY EQUIPMENT			NOTE		POSITION NUMBER	
ELABORATED BY Ing. Kluska M.			OLD DRAWING		DRAWING NUMBER	
TESTED BY			DRAWING NUMBER			
TECHNOLOGIST			DRAWING NUMBER			
NAME			Univer. downpipe entry cov.		Number of sheets	
			SD-KV AGV911		Sheet	

Created: 04.12.2025 08:23:31

Technical changes reserved