



# CATALOGUE

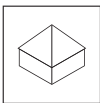
## ROOF COVERING KJG

---





**POWERFUL PARTNER FOR YOUR ROOF**



## Roof covering KJG FALZ

■ Roof covering KJG FALZ	6
■ Color shades and color quality	8
■ Accessories – roof covering KJG FALZ	10

## Metal roofing UNI

■ Metal roofing UNI 1	12
■ Color shades and color quality	14
■ Accessories – metal roofing UNI 1	15
■ Metal roofing UNI 2	16
■ Color shades and color quality	18
■ Accessories – metal roofing UNI 2	19

## Trapezoidal profiles TR

■ Trapezoidal profile 18A roof	20
■ Trapezoidal profile 18A+ roof	20
■ Trapezoidal profile 35A roof	21
■ Trapezoidal profile 35A+ roof	21
■ Trapezoidal profile 18B facade	22
■ Trapezoidal profile 18B+ facade	22
■ Trapezoidal profile 35B facade	23
■ Trapezoidal profile 35B+ facade	23
■ Color shades and color quality	24
■ Accessories – trapezoidal profiles TR	25

## Roof covering KJG CLICK system

■ Roof covering CLICK 205 P, R, T25, T58	26
■ Roof covering CLICK 306 P, R, T25, T58	26
■ Roof covering CLICK 515 P, R, T25, T58	26
■ Color shades and color quality	28
■ Accessories – roof covering KJG CLICK system	29

## Roof covering KJG rhomboid roof tile

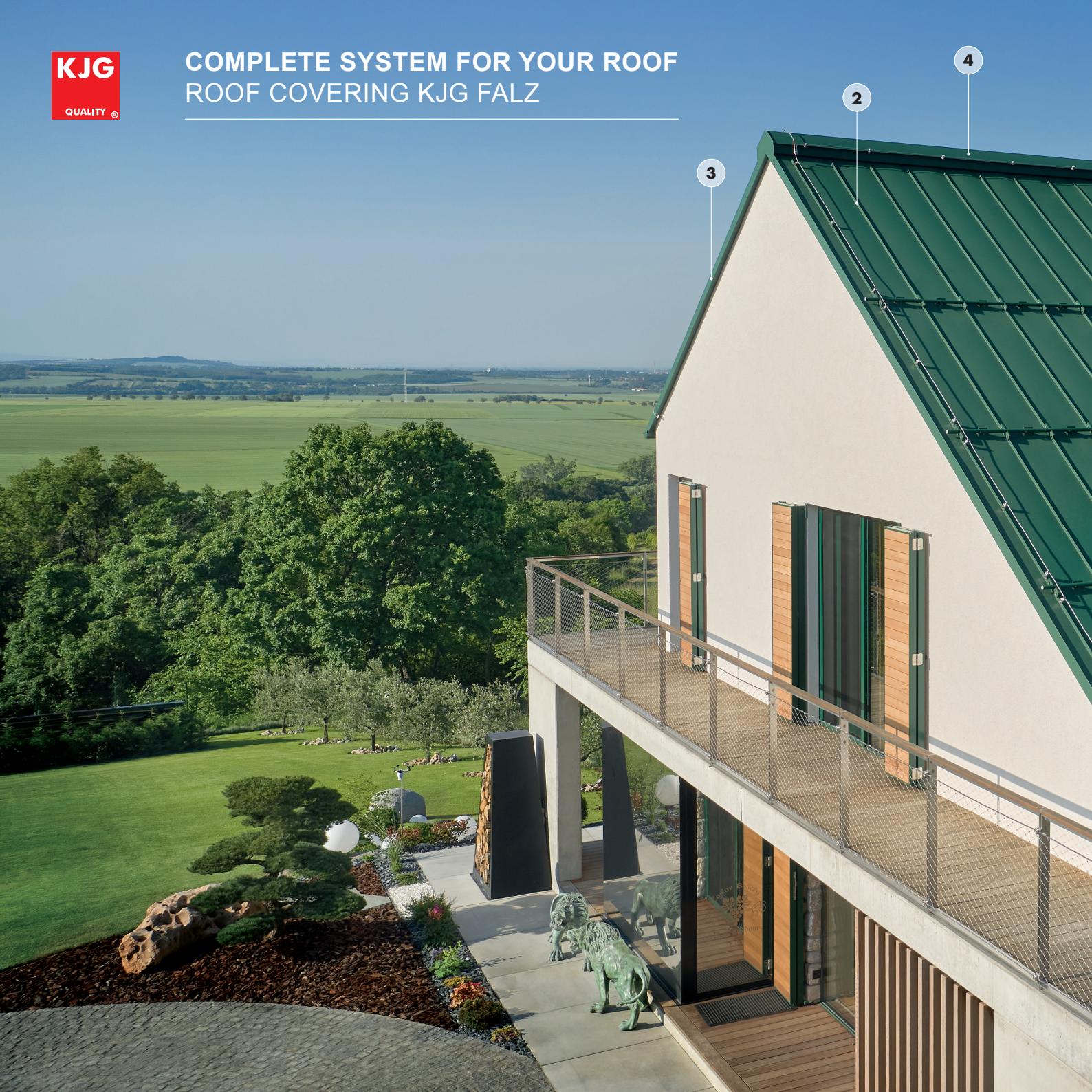
■ Roof covering KJG rhomboid roof tile 350 x 350	30
■ Color shades and color quality	32
■ Accessories – roof covering KJG rhomboid roof tile	33

## Facade panel KJG

■ Facade panel P, R, RR, DD, RDD	34
----------------------------------	----



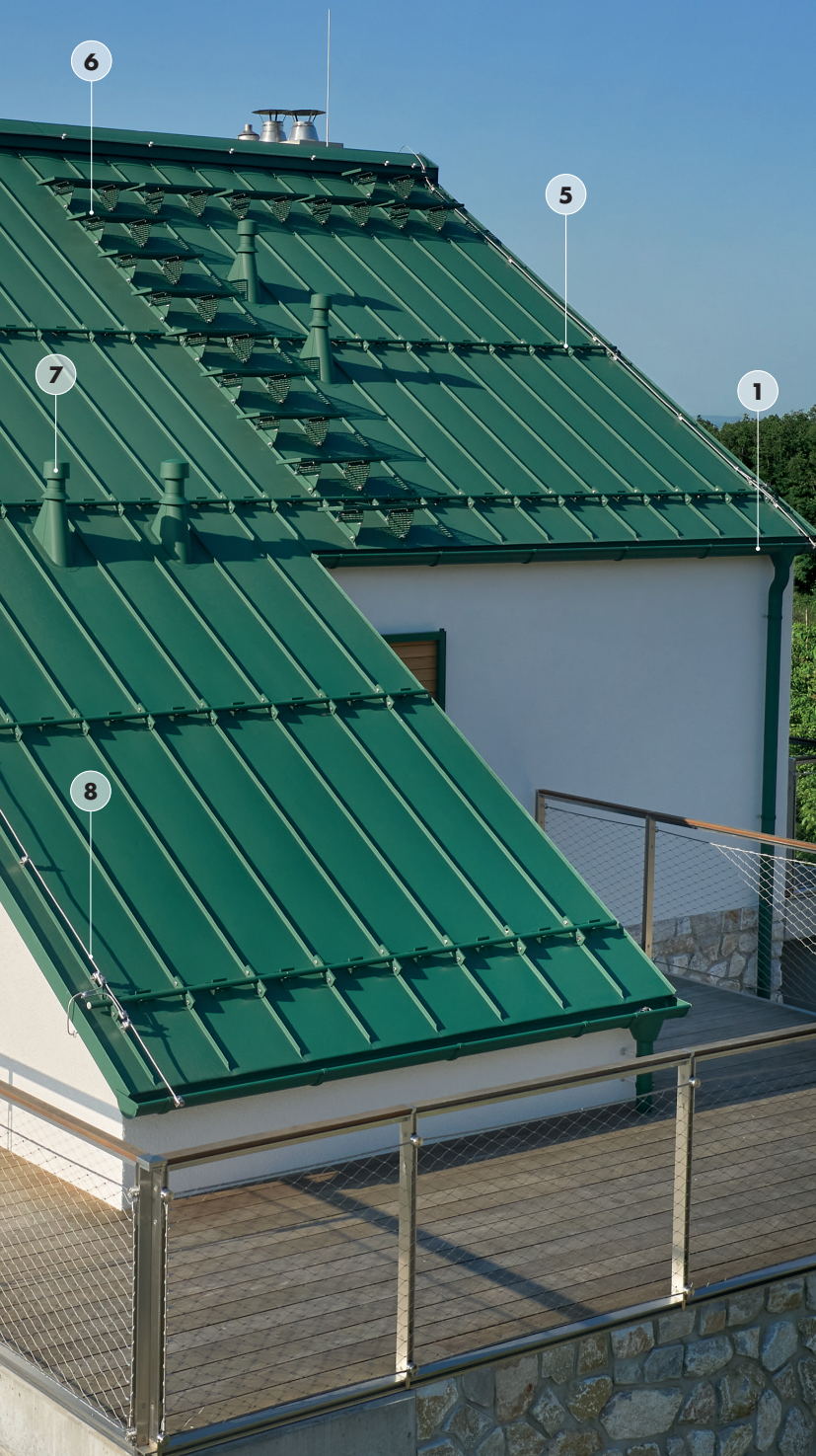
# COMPLETE SYSTEM FOR YOUR ROOF ROOF COVERING KJG FALZ



3

2

4



**KJG** specializes not only in the gutter system but also in roof coverings, roof accessories and much more. All products have fixed colours and match harmoniously as a whole. However, our priority remains ensuring maximum quality, offering reliable products and solutions for roof and gutter systems.

**1** GUTTER SYSTEM KJG

**2** ROOF COVERING KJG FALZ

**3** BARGE FLASHING

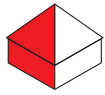
**4** ROOF RIDGE CAPPING

**5** SNOW STOPPERS

**6** ROOF STEPS

**7** VENTILATION CHIMNEYS

**8** DEHN – LIGHTNING ROD SYSTEM



## Roof covering KJG FALZ

### Technical parameters KJG FALZ

Developed width (mm)	Axial distance (c.a. mm)	Covering width (c.a. mm)
417	343	347
500	426	430
625	551	555
650	576	580
670	596	600

### Made from materials

- Galvanized steel
- Copper
- Stainless steel
- Titanium zinc
- Titanium zinc Patina, Graphite-grey
- Titanium zinc Patina, Blue-grey
- Aluminium
- Galvanized steel pre-painted
- Galvanized steel pre-painted MATT
- Galvanized steel pre-painted STUCCO
- Galvanized steel pre-painted MATT STUCCO
- Aluminium pre-painted
- Aluminium pre-painted W.15
- Aluminium pre-painted STUCCO
- Aluminium pre-painted W.15 STUCCO

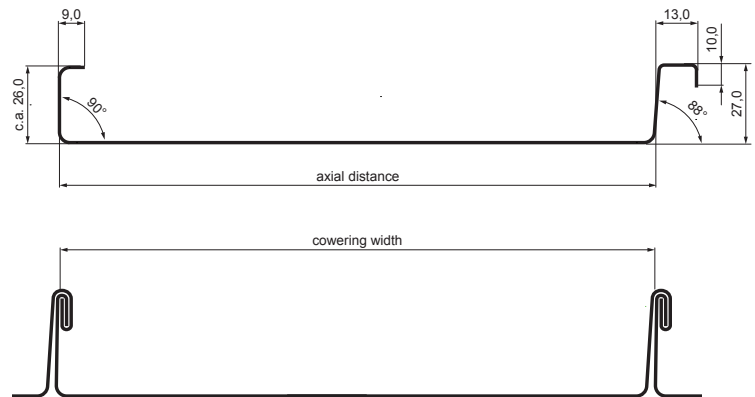
## Roof covering KJG FALZ

### Tradition and modern technology in one

KJG FALZ is a high-quality folded roof covering that stands out with its elegance, durability, and versatile application. Thanks to precise processing and a reliable locking system, it provides **maximum protection against rain, snow and strong wind.**

This roofing is ideal for both modern and historical buildings, while its flexibility allows coverage of even complex roof shapes. **Simple assembly, low weight and long service life** make KJG FALZ an excellent investment for every home.

Choose **KJG FALZ** – a combining of traditional look and innovation for a perfect roof!







### 1 Natur

<b>PZ</b> Galvanized steel	<b>M</b> Copper	<b>N</b> Stainless steel	<b>TZ</b> Titanium zinc	<b>TZ Patina – BG</b> Blue-grey RAL 7045	<b>TZ Patina – SG</b> Graphite-grey RAL 7043	<b>W</b> Aluminium
-------------------------------	--------------------	-----------------------------	----------------------------	--	--	-----------------------

### 2 Galvanized steel preprinted Polyester 25 µm

<b>TM</b> Testa di Moro RAL 8028	<b>AN</b> Anthracite RAL 7016	<b>IC</b> Intense black RAL 9005	<b>OC</b> Steel red RAL 3009	<b>MH</b> Copper brown RAL 8004	<b>SB</b> Grey white RAL 9002	<b>BH</b> White aluminium RAL 9006
<b>PS</b> Dusty grey RAL 7037	<b>MM</b> Metallic copper RAL extra	<b>BHT</b> Grey aluminium RAL 9007	<b>MZ</b> Moss green RAL 6005	<b>MOT</b> Gentian blue RAL 5010	<b>TZ</b> Reseda green RAL 6011	<b>TH</b> Dark brown ČOKO RAL 8017

### 3 Galvanized steel preprinted Polyuretan 35 µm RWG

<b>BHT – P.20</b> Grey aluminium RAL 9007
---

### 5 Galvanized steel preprinted MATT Polyester 35 µm – 3D EFFECT

<b>ANM</b> Anthracite RAL 7016	<b>TMM</b> Testa di Moro RAL 8028	<b>ICM</b> Intense black RAL 9005	<b>MHM</b> Copper brown RAL 8004	<b>OCM</b> Steel red RAL 3009	<b>PSM</b> Dusty grey RAL 7037
--------------------------------------	---	---	--	-------------------------------------	--------------------------------------

### 6 Galvanized steel preprinted STUCCO Polyester 25 µm

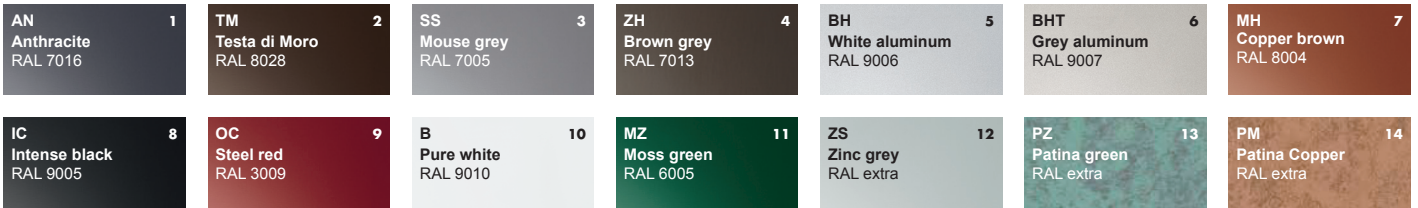
<b>ANS</b> Anthracite RAL 7016	<b>TMS</b> Testa di Moro RAL 8028	<b>ICS</b> Intense black RAL 9005	<b>OCS</b> Steel red RAL 3009	<b>MHS</b> Copper brown RAL 8004
--------------------------------------	---	---	-------------------------------------	--



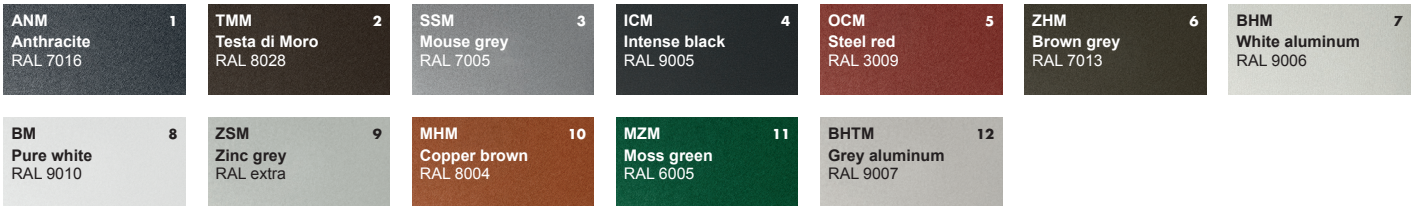
**7** Galvanized steel preprinted **MATT STUCCO**  
Polyester 35 µm – 3D EFFECT



**8** Aluminium preprinted  
Polyester 25 µm



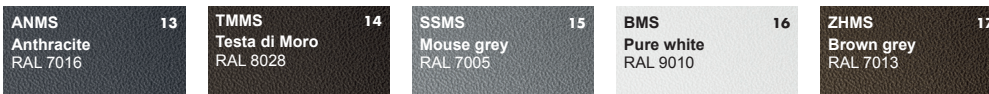
**9** Aluminium preprinted **W.15**  
Polyester 25 µm – 3D EFFECT



**10** Aluminium preprinted **STUCCO**  
Polyester 25 µm



**11** Aluminium preprinted **W.15 STUCCO**  
Polyester 25 µm – 3D EFFECT





Stainless steel clips for KJG FALZ



Screw with TORX head for clip galvanized steel



Groove sealing strip KJG FALZ



Roof step-set 800 x 250



Standing seam roof clamp for solar panel



Snow stopper clamp for FALZ



Extension for snow stopper pipe holder for FALZ



Ice breaker for snow stopper for FALZ



Pipe for snow stopper



PVC pipe coupling for snow stopper



PVC pipe end cap for snow stopper



PVC spacer ring for snow stopper



Roof step – set



Mounting plate holder for wooden log safety catch



Mounting plate for solar panel



Mounting plate basic



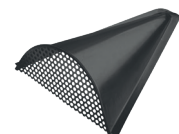
Plate for pipe 1 hole



Plate for pipe 2 holes

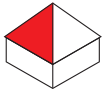


Ventilation chimney base, ventilation chimney + EPDM



Frog mouth vent cover










## Metal roofing UNI 1

### Technical parameters UNI 1

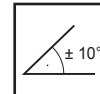
Covering width	1 105,0
Total width	1 195,0
Profile height	23,0
Shaped rib height (standard / non-standard)	20/15
Module length (standard / non-standard)	350/400
Minimum length	480,0
Maximum length	8 400,0

### Made from materials

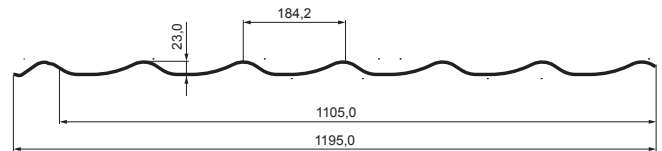
-  Galvanized steel prepainted
-  Galvanized steel prepainted MATT
-  Galvanized steel prepainted STUCCO
-  Galvanized steel prepainted MATT STUCCO
-  Aluminium prepainted



Option to apply anti-condensation and soundproofing felt (UNI 1 SQ)



Minimum slope



## Metal roofing UNI 1

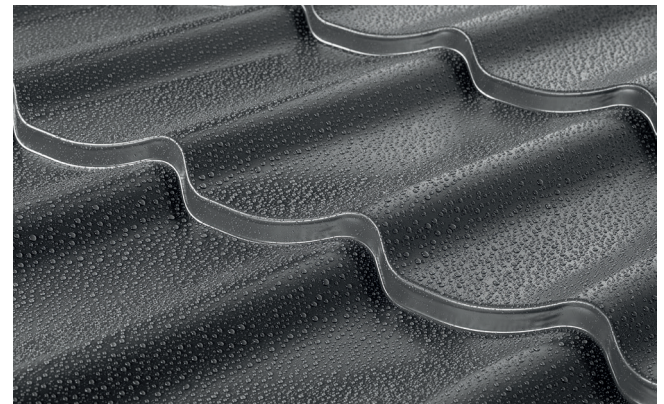
### A combination of elegance, durability, and practicality

Are you looking for a roof covering that gives your home a stylish look while ensuring maximum protection against adverse weather conditions? **UNI 1** is the ideal solution! This modern sheet metal roofing combines the timeless design of classic roof tiles with the advantages of lightweight and rigid sheet metal.

Thanks to precise processing and high-quality materials, it provides **excellent resistance to extreme weather conditions** such as strong wind, rain and freezing temperatures. At the same time, it maintains colour stability and a long service life without the need for demanding maintenance.

Installation of the roof covering UNI 1 is **fast and efficient**, saving both time and installation costs. Thanks to its low weight, it does not burden the roof structure, making it suitable not only for new buildings but also for renovations of older buildings.

Choose UNI 1 and give your home a **stylish look, reliable protection and exceptional quality that lasts for decades!**







### 2 Galvanized steel preprinted Polyester 25 µm

<b>TM</b> Testa di Moro RAL 8028	<b>AN</b> Anthracite RAL 7016	<b>IC</b> Intense black RAL 9005	<b>OC</b> Steel red RAL 3009	<b>MH</b> Copper brown RAL 8004	<b>SB</b> Grey white RAL 9002	<b>BH</b> White aluminum RAL 9006
<b>PS</b> Dusty grey RAL 7037	<b>MM</b> Metallic copper RAL extra	<b>BHT</b> Grey aluminum RAL 9007	<b>MZ</b> Moss green RAL 6005	<b>MOT</b> Gentian blue RAL 5010	<b>TZ</b> Reseda green RAL 6011	<b>TH</b> Dark brown ČOKO RAL 8017
<b>B</b> Pure white RAL 9010	<b>LS</b> Light grey RAL 7035	<b>SK</b> Ivory RAL 1015	<b>RC</b> Rally red RAL 3020			

### 5 Galvanized steel preprinted MATT Polyester 35 µm – 3D EFFECT

<b>ANM</b> Anthracite RAL 7016	<b>TMM</b> Testa di Moro RAL 8028	<b>ICM</b> Intense black RAL 9005	<b>MHM</b> Copper brown RAL 8004	<b>OCM</b> Steel red RAL 3009	<b>PSM</b> Dusty grey RAL 7037
--------------------------------------	---	---	--	-------------------------------------	--------------------------------------

### 6 Galvanized steel preprinted STUCCO Polyester 25 µm

<b>ANS</b> Anthracite RAL 7016	<b>TMS</b> Testa di Moro RAL 8028	<b>ICS</b> Intense black RAL 9005	<b>OCS</b> Steel red RAL 3009	<b>MHS</b> Copper brown RAL 8004
--------------------------------------	---	---	-------------------------------------	--

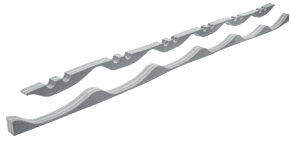
### 7 Galvanized steel preprinted MATT STUCCO Polyester 35 µm – 3D EFFECT

<b>ANMS</b> Anthracite RAL 7016	<b>TMMS</b> Testa di Moro RAL 8028
---------------------------------------	--

### 8 Aluminium preprinted Polyester 25 µm

<b>AN</b> Anthracite RAL 7016	<b>TM</b> Testa di Moro RAL 8028	<b>BH</b> White aluminum RAL 9006	<b>BHT</b> Grey aluminum RAL 9007	<b>B</b> Pure white RAL 9010
-------------------------------------	--	---	---	------------------------------------

Printing technology does not allow exact reproduction of paint colours, so the listed colours are indicative and may differ from the actual ones. Sample colours are subject to manufacturing tolerances and may slightly differ from the material delivered to the construction site.



Infill strip gray for metal roofing  
UNI 1 tiles



Ridge cap for metal roofing



Ridge edge cap



Ridge edge cap rounded



Ridge vent



Snow stopper arched



EPDM gasket under arched  
snow stopper



Snow stopper



Galvanized reinforcement  
of snow stopper



EPDM gasket under snow  
stopper



Roof ventilation chimney  
UNI 1 Ø 150 mm



Hose with tightening clamp 65  
cm/15 ribbed



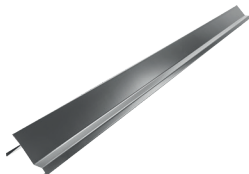
Walkway for UNI metal roofing



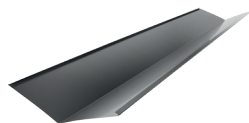
Connector for roof walkways



Drip edge



Barge flashing



Valley gutter



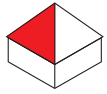
Roof valley sealing wedge



Farmer screw galvanized steel



Paint correction spray 400 ml








## Metal roofing UNI 2

### Technical parameters UNI 2

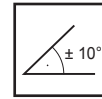
Covering width	1 100,0
Total width	1 184,0
Profile height	24,5
Shaped rib height (standard / non-standard)	20/15
Module length (standard / non-standard)	350/400
Minimum length	480,0
Maximum length	8 400,0

### Made from materials

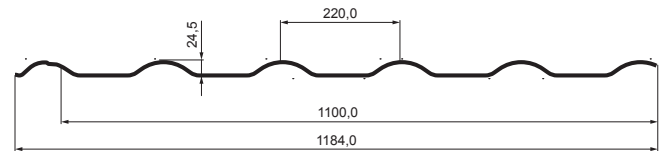
-  Galvanized steel prepainted
-  Galvanized steel prepainted MATT
-  Galvanized steel prepainted STUCCO
-  Galvanized steel prepainted MATT STUCCO
-  Aluminium prepainted



Option to apply anti-condensation and soundproofing felt (**UNI 2 SQ**)



Minimum slope



## Metal roofing UNI 2

### Classic elegance in a modern form

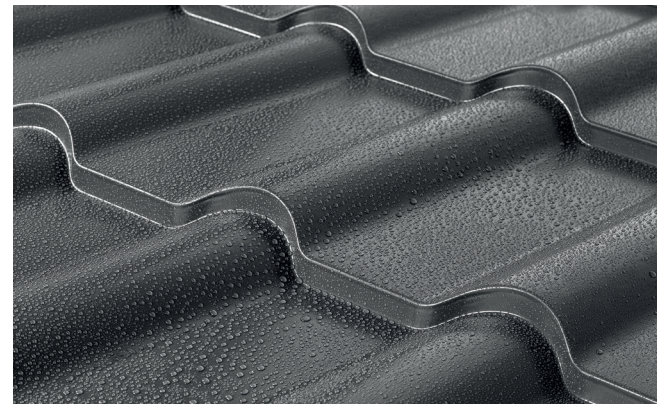
The roof is the crown of your house, and that is why it deserves the very best! **UNI 2** is a reliable sheet metal roof covering that combines timeless design and high functionality. Its elegant profile gives the roof an exclusive look while providing exceptional resistance to weather conditions.

Thanks to precise processing and high-quality materials, you can rely on long service life, minimal maintenance and high mechanical strength.

**UNI 2 is designed to withstand wind, rain, snow and UV radiation**, ensuring protection for your home for many years.

Installation of this roof covering is **fast and simple**, allowing efficient execution of roofing projects without unnecessary complications. Moreover, its low weight does not burden the roof structure, which is appreciated by owners of both new buildings and renovated older buildings.

Give your home **UNI 2 – the perfect harmony of aesthetics, durability and modern design!**







**2** Galvanized steel preprinted  
Polyester 25 µm

<b>TM</b> Testa di Moro RAL 8028	<b>AN</b> Anthracite RAL 7016	<b>IC</b> Intense black RAL 9005	<b>OC</b> Steel red RAL 3009	<b>MH</b> Copper brown RAL 8004	<b>SB</b> Grey white RAL 9002	<b>BH</b> White aluminum RAL 9006
<b>PS</b> Dusty grey RAL 7037	<b>MM</b> Metallic copper RAL extra	<b>BHT</b> Grey aluminum RAL 9007	<b>MZ</b> Moss green RAL 6005	<b>MOT</b> Gentian blue RAL 5010	<b>TZ</b> Reseda green RAL 6011	<b>TH</b> Dark brown ČOKO RAL 8017
<b>B</b> Pure white RAL 9010	<b>LS</b> Light grey RAL 7035	<b>SK</b> Ivory RAL 1015	<b>RC</b> Rally red RAL 3020			

**5** Galvanized steel preprinted MATT  
Polyester 35 µm – 3D EFFECT

<b>ANM</b> Anthracite RAL 7016	<b>TMM</b> Testa di Moro RAL 8028	<b>ICM</b> Intense black RAL 9005	<b>MHM</b> Copper brown RAL 8004	<b>OCM</b> Steel red RAL 3009	<b>PSM</b> Dusty grey RAL 7037
--------------------------------------	---	---	--	-------------------------------------	--------------------------------------

**6** Galvanized steel preprinted STUCCO  
Polyester 25 µm

<b>ANS</b> Anthracite RAL 7016	<b>TMS</b> Testa di Moro RAL 8028	<b>ICS</b> Intense black RAL 9005	<b>OCS</b> Steel red RAL 3009	<b>MHS</b> Copper brown RAL 8004
--------------------------------------	---	---	-------------------------------------	--

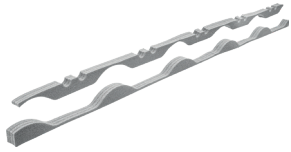
**7** Galvanized steel preprinted MATT STUCCO  
Polyester 35 µm – 3D EFFECT

<b>ANMS</b> Anthracite RAL 7016	<b>TMMS</b> Testa di Moro RAL 8028
---------------------------------------	--

**8** Aluminium preprinted  
Polyester 25 µm

<b>AN</b> Anthracite RAL 7016	<b>TM</b> Testa di Moro RAL 8028	<b>BH</b> White aluminum RAL 9006	<b>BHT</b> Grey aluminum RAL 9007	<b>B</b> Pure white RAL 9010
-------------------------------------	--	---	---	------------------------------------

Printing technology does not allow exact reproduction of paint colours, so the listed colours are indicative and may differ from the actual ones. Sample colours are subject to manufacturing tolerances and may slightly differ from the material delivered to the construction site.



Infill strip gray for metal roofing  
UNI 2 tiles



Ridge cap for metal roofing



Ridge edge cap



Ridge edge cap rounded



Ridge vent



Snow stopper arched



EPDM gasket under arched  
snow stopper



Snow stopper



Galvanized reinforcement  
of snow stopper



EPDM gasket under snow  
stopper



Roof ventilation chimney  
UNI 1 Ø 150 mm



Hose with tightening clamp 65  
cm/15 ribbed



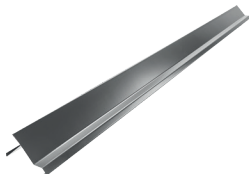
Walkway for UNI metal roofing



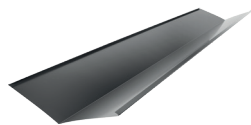
Connector for roof walkways



Drip edge



Barge flashing



Valley gutter



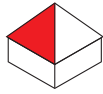
Roof valley sealing wedge



Farmer screw galvanized steel



Paint correction spray 400 ml



### Trapezoidal profile TR 18A

#### Technical parameters TR 18A

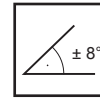
Covering width	1 100,0
Total width	1 138,0
Profile height	18,0
Minimum length	480,0
Maximum length	8 000,0

#### Made from materials

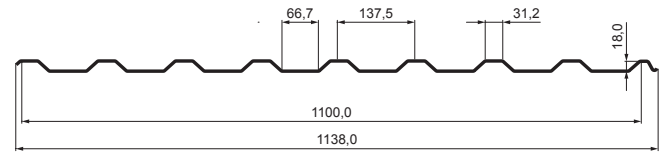
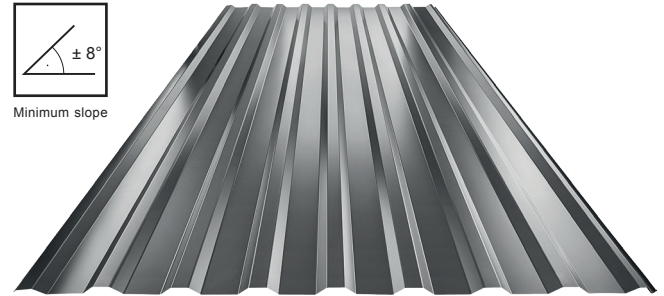
- Galvanized steel
- Aluzinc
- Galvanized steel pre-painted
- Galvanized steel pre-painted MATT
- Aluminium
- Aluminium pre-painted



Option to apply anti-condensation and soundproofing felt (TR 18A SQ)



Minimum slope



### Trapezoidal profile TR 18A+

#### Technical parameters TR 18A+

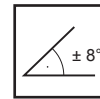
Covering width	1 100,0
Total width	1 138,0
Profile height	18,0
Minimum length	480,0
Maximum length	8 000,0

#### Made from materials

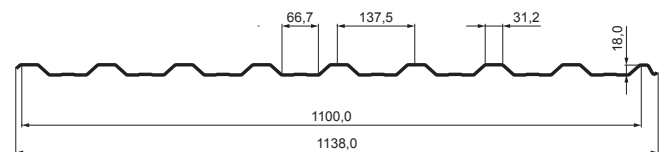
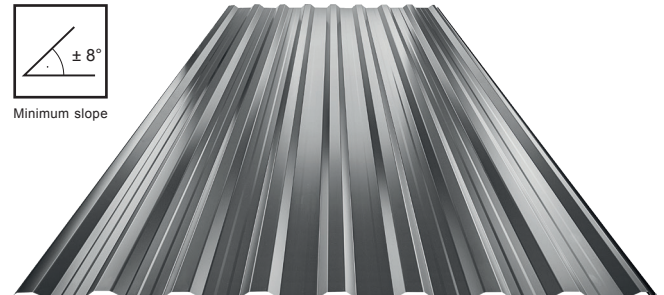
- Galvanized steel
- Aluzinc
- Galvanized steel pre-painted
- Galvanized steel pre-painted MATT
- Aluminium
- Aluminium pre-painted

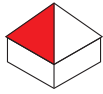


Option to apply anti-condensation and soundproofing felt (TR 18A+ SQ)



Minimum slope





### Trapezoidal profile TR 35A

#### Technical parameters TR 35A

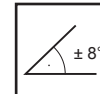
Covering width	1 060,0
Total width	1 085,0
Profile height	35,0
Minimum length	480,0
Maximum length	8 000,0

#### Made from materials

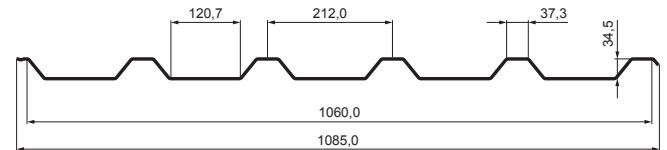
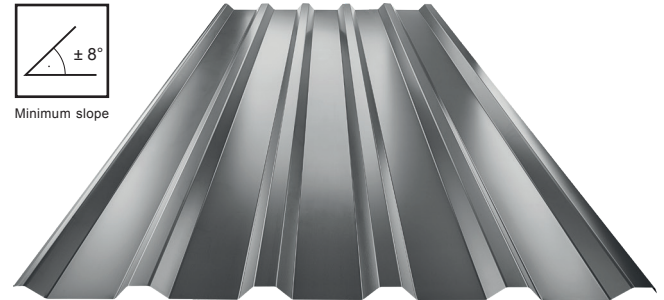
- Galvanized steel
- Aluzinc
- Galvanized steel prepainted
- Galvanized steel prepainted MATT
- Aluminium
- Aluminium prepainted



Option to apply anti-condensation and soundproofing felt (TR 35A SQ)



Minimum slope



### Trapezoidal profile TR 35A+

#### Technical parameters TR 35A+

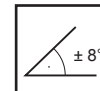
Covering width	1 060,0
Total width	1 085,0
Profile height	35,0
Minimum length	480,0
Maximum length	8 000,0

#### Made from materials

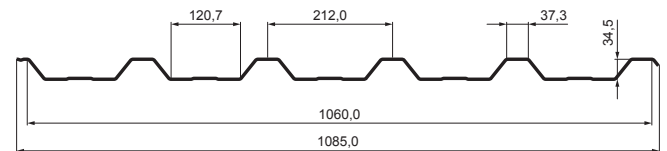
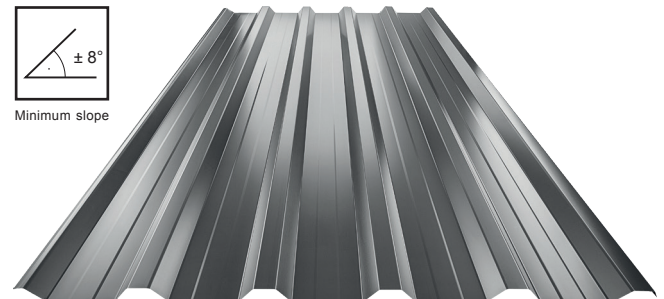
- Galvanized steel
- Aluzinc
- Galvanized steel prepainted
- Galvanized steel prepainted MATT
- Aluminium
- Aluminium prepainted

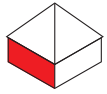


Option to apply anti-condensation and soundproofing felt (TR 35A+ SQ)



Minimum slope





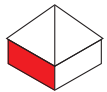
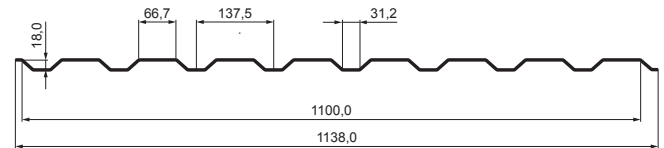
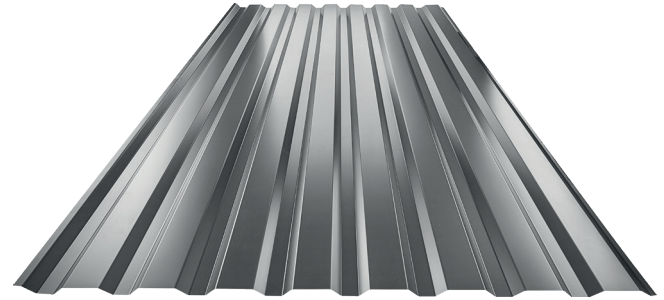
### Trapezoidal profile TR 18B

#### Technical parameters TR 18B

Covering width	1 100,0
Total width	1 138,0
Profile height	18,0
Minimum length	480,0
Maximum length	8 000,0

#### Made from materials

- Galvanized steel
- Aluzinc
- Galvanized steel pre-painted
- Galvanized steel pre-painted MATT
- Aluminium
- Aluminium pre-painted



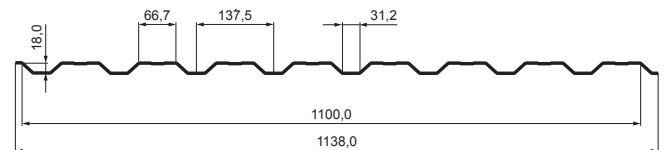
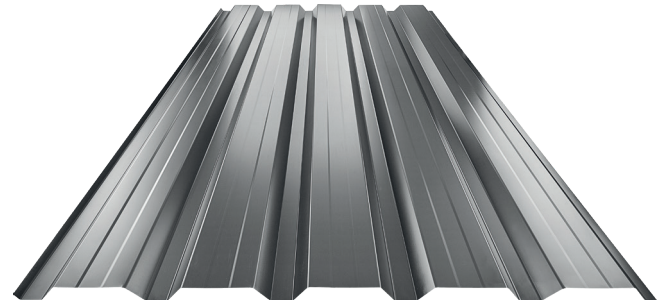
### Trapezoidal profile TR 18B+

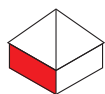
#### Technical parameters TR 18B+

Covering width	1 100,0
Total width	1 138,0
Profile height	18,0
Maximum length	8 000,0

#### Made from materials

- Galvanized steel
- Aluzinc
- Galvanized steel pre-painted
- Galvanized steel pre-painted MATT
- Aluminium
- Aluminium pre-painted











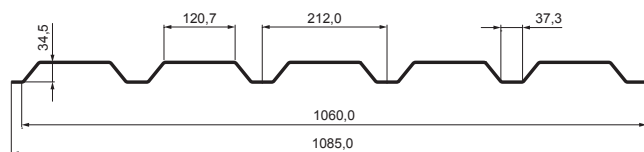
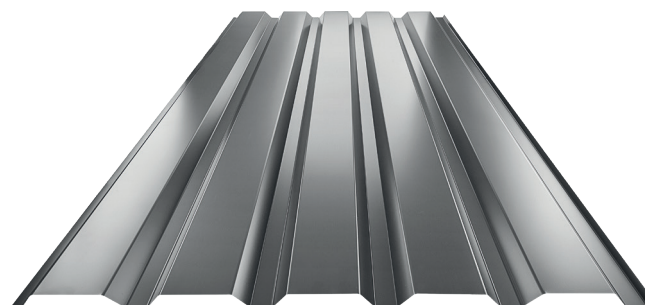
### Trapezoidal profile TR 35B

#### Technical parameters TR 35B

Covering width	1 060,0
Total width	1 085,0
Profile height	35,0
Minimum length	480,0
Maximum length	8 000,0

#### Made from materials

-  Galvanized steel
-  Aluzinc
-  Galvanized steel pre-painted
-  Galvanized steel pre-painted MATT
-  Aluminium
-  Aluminium pre-painted









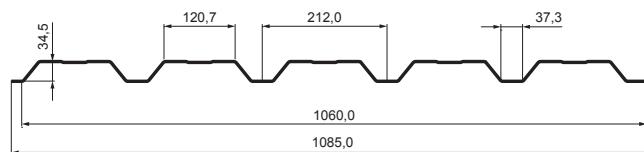
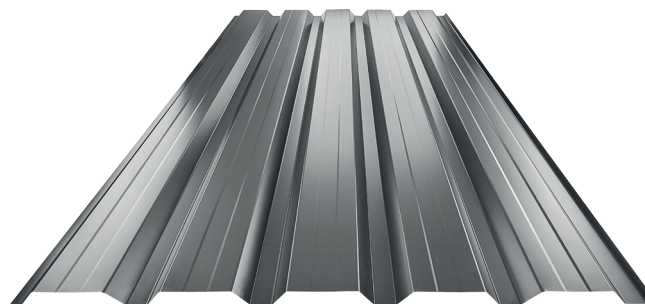
### Trapezoidal profile TR 35B+

#### Technical parameters TR 35B+

Covering width	1 060,0
Total width	1 085,0
Profile height	35,0
Minimum length	480,0
Maximum length	8 000,0

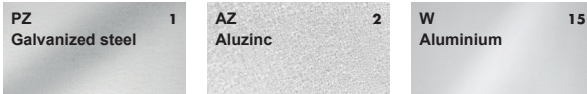
#### Made from materials

-  Galvanized steel
-  Aluzinc
-  Galvanized steel pre-painted
-  Galvanized steel pre-painted MATT
-  Aluminium
-  Aluminium pre-painted

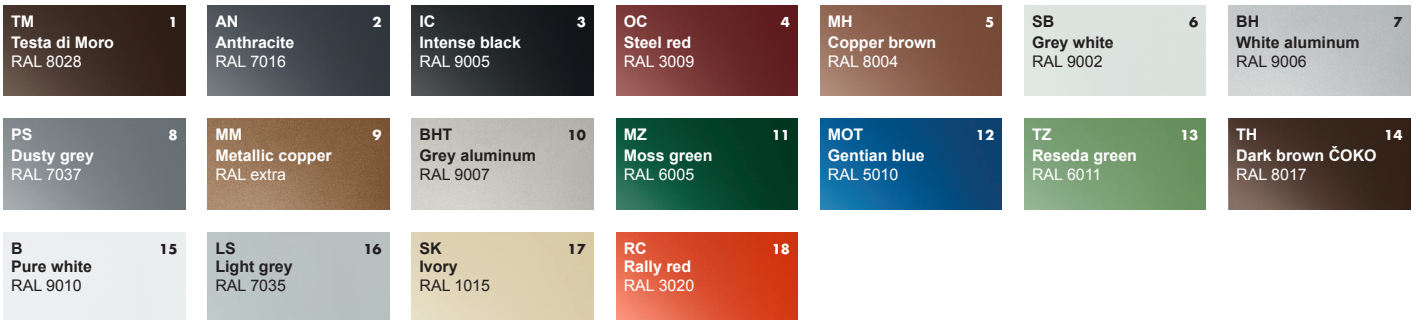




### 1 Natur



### 2 Galvanized steel prepainted Polyester 25 µm

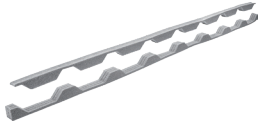


### 5 Galvanized steel prepainted MATT Polyester 35 µm – 3D EFFECT

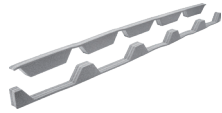


### 8 Aluminium prepainted Polyester 25 µm

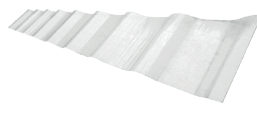




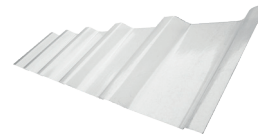
Profile filler strip gray for trapezoidal sheet TR 18



Profile filler strip gray for trapezoidal sheet TR 35



Transparent trapezoidal sheet TR 18 [s=1,00]



Transparent trapezoidal sheet TR 35 [s=1,00]



Galvanized TR screw for steel



Galvanized TR screw for wood



Aluminum calotte washer TR



Plate washer ALUZINC



Galvanized screw DABO



Holder for trapezoidal sheet 1-hole



Holder for trapezoidal sheet 2-hole



Pipe for snow stopper



PVC pipe coupling for snow stopper



PVC pipe end cap for snow stopper



PVC spacer ring for snow stopper



Ice stopper for trapezoidal sheet



PVC black sleeve for ice stopper



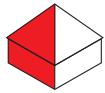
Paint correction spray 400 ml



Roof membrane DELUXE 250 g adhesive tape



Coil perforated 100 mm / 5 mm / 30 m



### Roof covering KJG CLICK SYSTEM

#### Tehnički parametri KJG CLICK

Variants	205	306	515
Covering width	205,0	306,0	515,0
Total width	236,0	337,0	547,0
Profile height	25,0	25,0	25,0
Minimum length	780,0	780,0	780,0
Maximum length	8 000,0	8 000,0	8 000,0

**P – STRAIGHT**

**R – RADIUS**

**T25 – SHAPED RIB 25 mm**

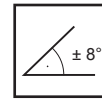
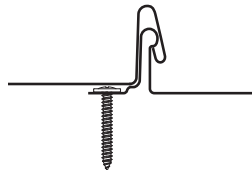
**T58 – SHAPED RIB 58 mm**



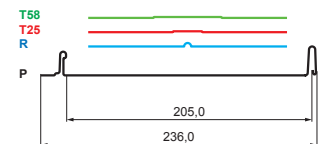
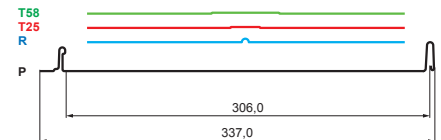
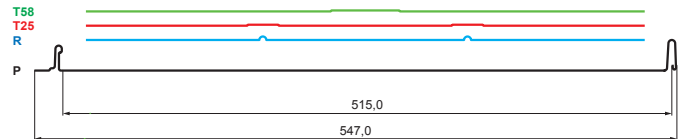
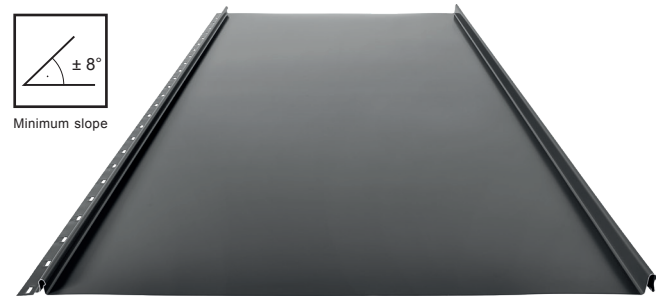
Option to apply anti-condensation and soundproofing felt (CLICK PSQ)

#### Made from materials

- Galvanized steel prepainted
- Galvanized steel prepainted MATT
- Galvanized steel prepainted STUCCO
- Galvanized steel prepainted MATT STUCCO



Minimum slope



## Roof covering KJG CLICK system

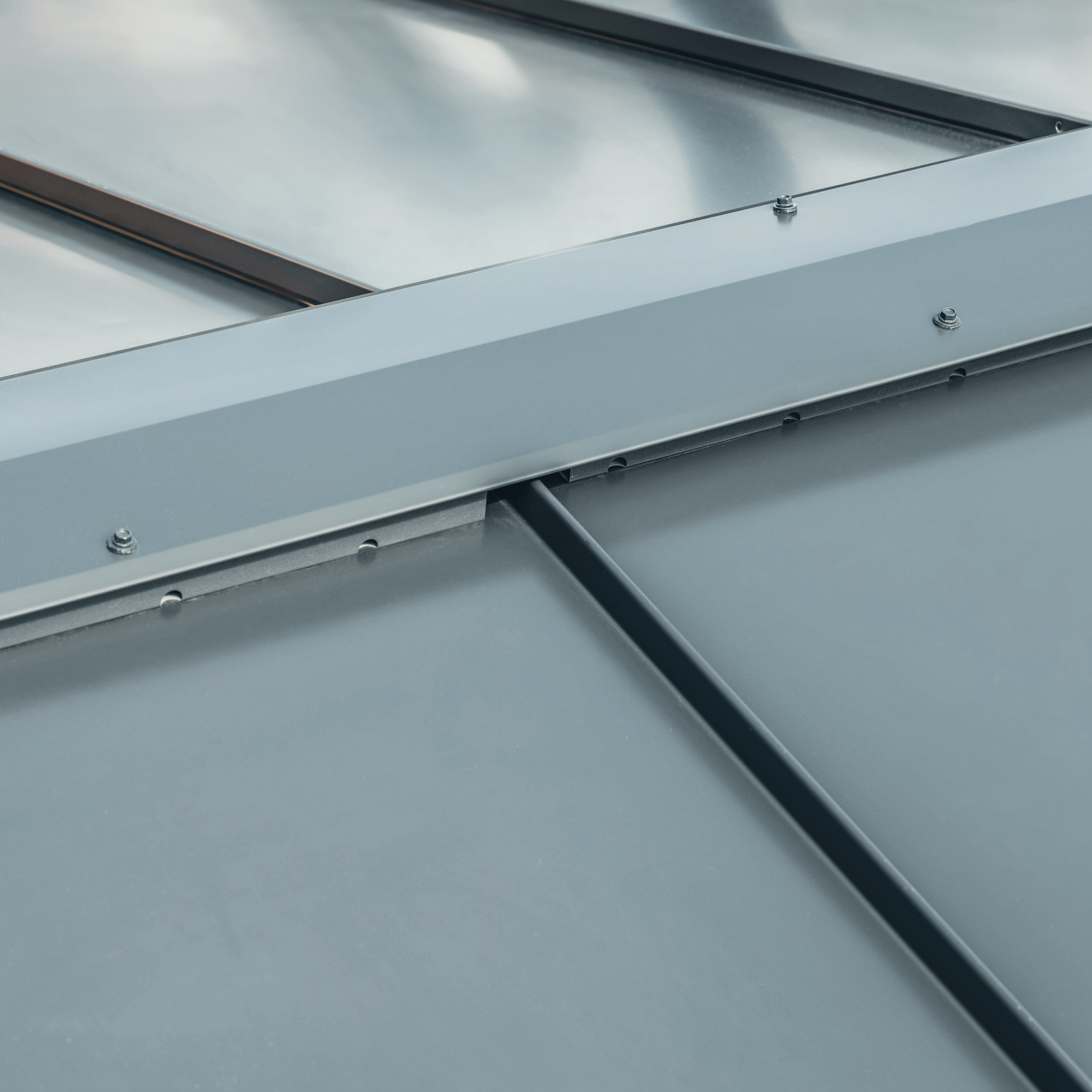
### Modern design with easy installation

KJG CLICK is an innovative roof covering that provides a modern look, high durability and **simplified installation at the most**. Thanks to the special locking system, the individual panels are easily connected without the need for additional tools, which saves time and installation costs.

This system is available in four **different profiles**, which allows adaptation to different types of buildings – from modern new buildings up to the reconstruction of traditional buildings. The roof covering is made of first-class materials that guarantee a long service life, resistance to extreme weather conditions and minimal maintenance.

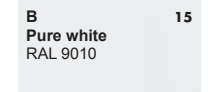
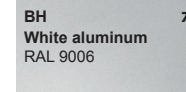
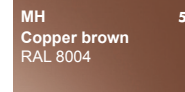
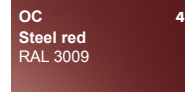
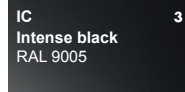
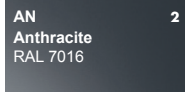
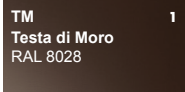
With KJG CLICK you get a **reliable, aesthetic and practical solution** for your roof that combines advanced technology with an elegant design!



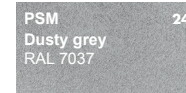
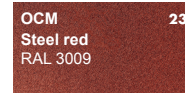
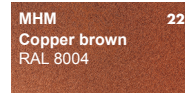
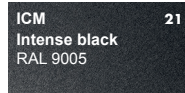
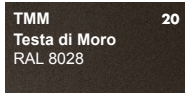
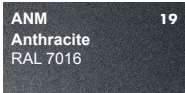




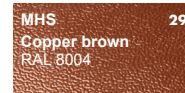
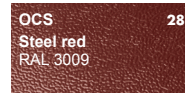
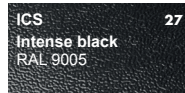
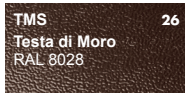
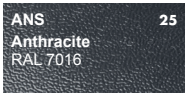
**2** Galvanized steel preprinted  
Polyester 25 µm



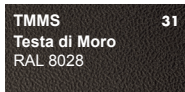
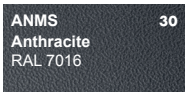
**5** Galvanized steel preprinted MATT  
Polyester 35 µm – 3D EFFECT



**6** Galvanized steel preprinted STUCCO  
Polyester 25 µm



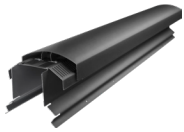
**7** Galvanized steel preprinted MATT STUCCO  
Polyester 35 µm – 3D EFFECT





## ACCESSORIES

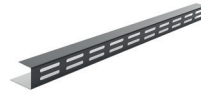
### ROOF COVERING KJG CLICK SYSTEM



Ridge vent UNI I=1,22 m



Walkway for CLICK panel



Ridge ventilation profile L25



Self-drilling mounting screw  
GM-S with flat head



Snow stopper two-pipe



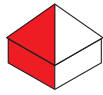
Pipe for snow stopper



PVC pipe coupling for  
snow stopper



PVC pipe end cap for  
snow stopper



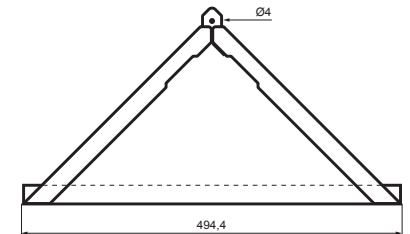
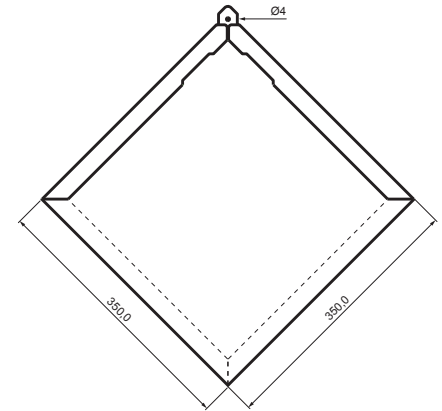
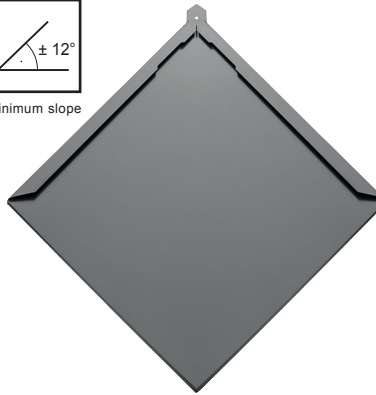
### Roof covering KJG rhomboid roof tile

#### Technical parameters KJG rhomboid roof tile











Dimension	350 x 350
Consumption pcs/m <sup>2</sup>	9,47



Minimum slope



#### Made from materials

-  Galvanized steel
-  Copper
-  Stainless steel
-  Titanium zinc
-  Titanium zinc Patina, Blue-grey
-  Titanium zinc Patina, Graphite-grey
-  Galvanized steel prepainted
-  Galvanized steel prepainted MATT
-  Galvanized steel prepainted STUCCO
-  Galvanized steel prepainted MATT STUCCO

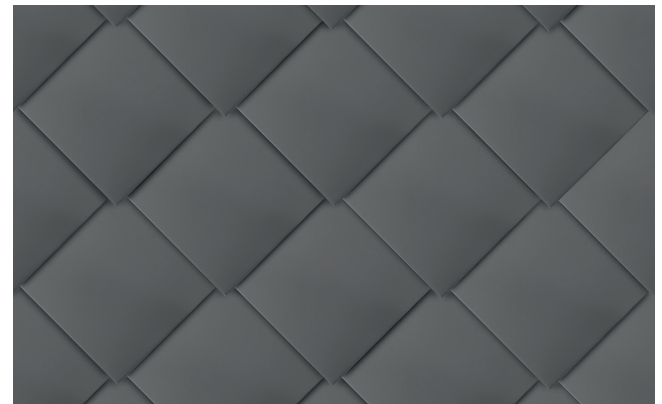
## Roof covering KJG rhomboid roof tile

### Timeless elegance for your home

KJG RHOMBOID ROOF TILE is the ideal solution for those seeking a combination of traditional look and modern technologies. This **structured sheet metal roofing** is characterized by high durability, aesthetic precision and easy installation.

Thanks to its shape and fastening system, it **provides exceptional strength and protection** against weather conditions, such as strong wind, rain and snow. It is suitable not only for family houses but also for historical buildings and modern projects where emphasis is placed on detail and long-lasting quality.

Installation of the KJG TEMPLATE is fast **and efficient**, while individual parts fit together perfectly to ensure a robust and reliable roof structure. With this roofing, you get a **timeless look and premium protection for your home!**








**1**  **Natur**


<b>M</b> Copper 3	<b>TZ</b> Titanium zinc 5	<b>TZ Patina – BG</b> Blue-grey RAL 7045 6	<b>TZ Patina – SG</b> Graphite-grey RAL 7043 7
-------------------------	---------------------------------	---	---

**2**  **Galvanized steel preprinted**  
Polyester 25 µm

<b>TM</b> Testa di Moro RAL 8028 1	<b>AN</b> Anthracite RAL 7016 2	<b>IC</b> Intense black RAL 9005 3	<b>OC</b> Steel red RAL 3009 4	<b>MH</b> Copper brown RAL 8004 5	<b>SB</b> Grey white RAL 9002 6	<b>BH</b> White aluminum RAL 9006 7
<b>PS</b> Dusty grey RAL 7037 8	<b>MM</b> Metallic copper RAL extra 9	<b>BHT</b> Grey aluminum RAL 9007 10	<b>MZ</b> Moss green RAL 6005 11	<b>MOT</b> Gentian blue RAL 5010 12	<b>TZ</b> Reseda green RAL 6011 13	

**5**  **Galvanized steel preprinted MATT**  
Polyester 35 µm – 3D EFFECT

<b>ANM</b> Anthracite RAL 7016 19	<b>TMM</b> Testa di Moro RAL 8028 20	<b>ICM</b> Intense black RAL 9005 21	<b>MHM</b> Copper brown RAL 8004 22	<b>OCM</b> Steel red RAL 3009 23	<b>PSM</b> Dusty grey RAL 7037 24
--	---	---	--	---	--

**6**  **Galvanized steel preprinted STUCCO**  
Polyester 25 µm

<b>ANS</b> Anthracite RAL 7016 25	<b>TMS</b> Testa di Moro RAL 8028 26	<b>ICS</b> Intense black RAL 9005 27	<b>OCS</b> Steel red RAL 3009 28	<b>MHS</b> Copper brown RAL 8004 29
--	---	---	---	--



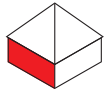
Clip for rhomboid roof tile  
stainless



Roof covering ridge capping



Nose snow stopper for  
rhomboid roof tile







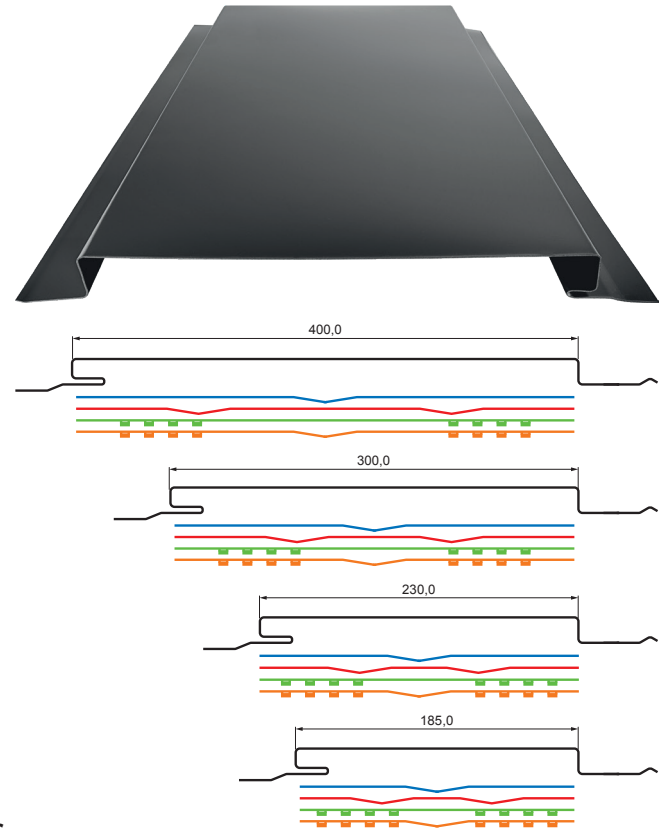
## Facade panel KJG

### Technical parameters FACADE PANEL KJG P, R, RR, DD, RDD

Variants	185	230	300	400
Covering width	185,0	230,0	300,0	400,0
Developed width	285,0	331,0	400,0	500,0
Profile height	25,0	25,0	25,0	25,0
False joint	0 – 25,0	0 – 25,0	0 – 25,0	0 – 25,0
Minimum length	800,0	800,0	800,0	800,0
Maximum length	8 000,0	8 000,0	8 000,0	8 000,0

### Made from materials

-  Galvanized steel prepainted
-  Galvanized steel prepainted MATT
-  Galvanized steel prepainted STUCCO
-  Galvanized steel prepainted MATT STUCCO



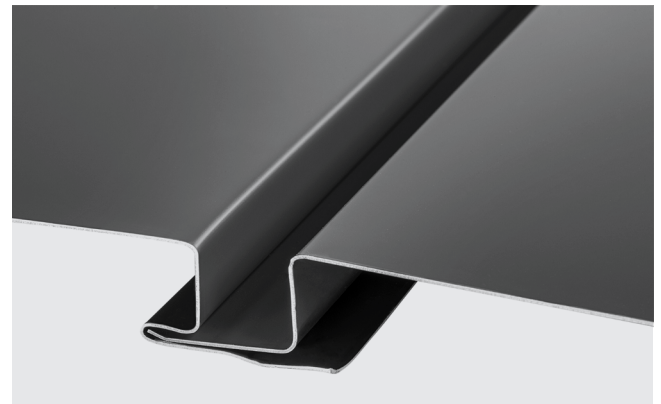
## Facade panel KJG

### Modern design and durability for your exterior

The KJG facade panel represents an elegant and functional solution for cladding facades that combine a **modern look, high durability and easy installation**. Thanks to precise processing and high-quality materials, this panel is suitable for a wide range of buildings—from family houses to commercial buildings.

Its **robust structure and innovative fastening system** ensure long service life and effective protection of the facade against adverse weather conditions. In addition to its practical features, it offers a wide range of colour and surface finish options, thanks to which it fits perfectly to any architectural concept.

Easy installation and a **hidden anchoring** system allow for fast and aesthetic execution without visible joints, thus creating a clean and a minimalist look. With KJG facade panels you get a **reliable and a visually attractive facade** that will preserve its quality for many years.





1  
2  
3  
4  
5  
6  
7  
8  
9  
10  
11  
12  
13  
14  
15  
16  
17  
18  
19  
20



# PLACE FOR POWERFUL IDEAS

---





**KJG**

QUALITY®

# OWN TRANSPORT TO THE CONSTRUCTION SITE

---



# KJG®

## 10 REASONS TO CHOOSE KJG

- 1. Quality products with a long tradition
- 2. Complete roof system
- 3. Wide range of materials
- 4. Simple installation
- 5. Delivery directly on request
- 6. Resistant to weather conditions
- 7. Aesthetic appearance
- 8. KJG®
- 9. Own paint shop
- 10. References

# KJG®

## **KJG a.s.**

Malinovského 800/131  
916 21 Čachtice  
Slovakia

Company ID: 31439951  
Tax ID: 2020380769  
VAT reg. no.: SK2020380769

E-mail: [kjg@kjg.sk](mailto:kjg@kjg.sk)  
Telefón: +421 32 774 34 10  
Web: [www.kjg.sk](http://www.kjg.sk)

## **Shops KJG:**

Čachtice, Družstevná 746/32

Bratislava, Rybníčná 49

Nitra, Cabajská 23

Banská Bystrica, Zvolenská cesta 14

Turčin - Donji Kneginec, Ulica kralja Andrije II. 4  
(Croatia)