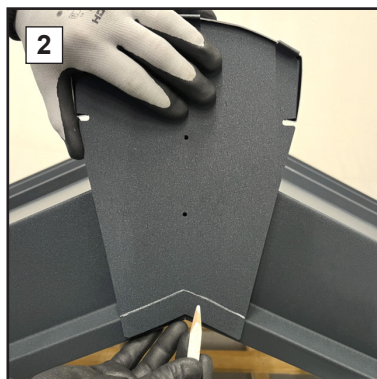


ASSEMBLY INSTRUCTIONS

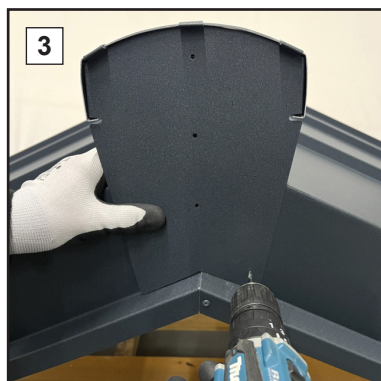
FRONT RIDGE CAP ENDING UNI



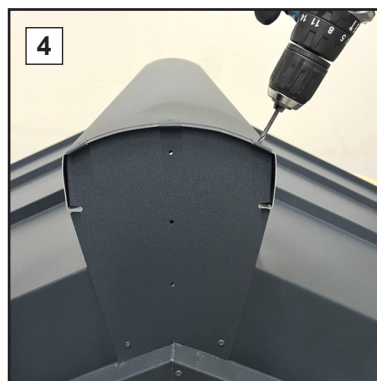
The top cover of the ridge cap must overhang by approximately 15 mm.



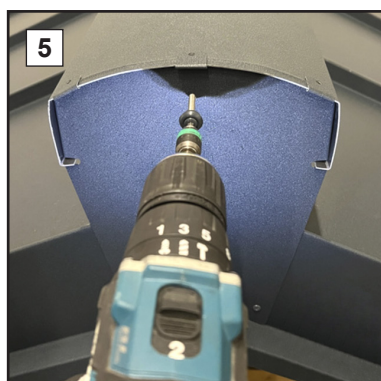
Mark the overhang on the lower part of the front and cut off the unnecessary material.



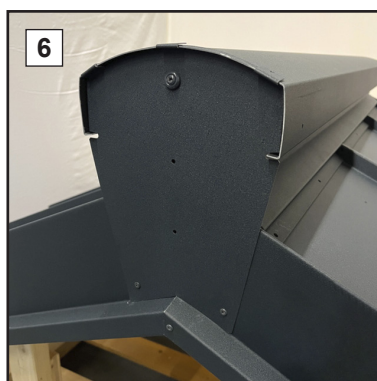
Fasten the front using rivets.



Bend the top handles and rivet them.



Fasten the ridge side using a screw with a sealing rubber.



Detail of the correct installation of the front ridge cap ending UNI.