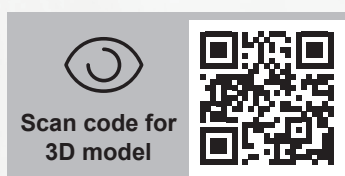


STAINLESS STEEL UNI PLATFORM TO ATTACH OB M10



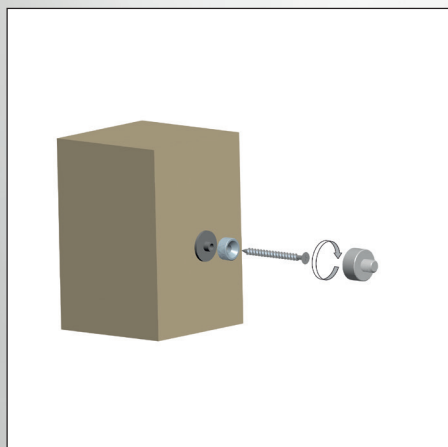
PRODUCT DESCRIPTION

Stainless steel universal platform for attaching the clamping sleeve to the wall. The rubber pad prevents the penetration of moisture into the mounting opening, resistant to UV radiation. Simple and quick assembly on all materials.

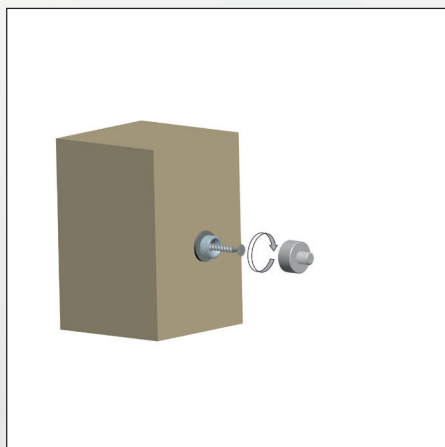
ADVANTAGES AT THE FIRST SIGHT

- Long-lasting durability thanks to stainless steel material
- The rubber pad prevents moisture from entering the mounting hole
- The rubber pad prevents contact corrosion
- Universal attachment of the KJG downpipe sleeve M10

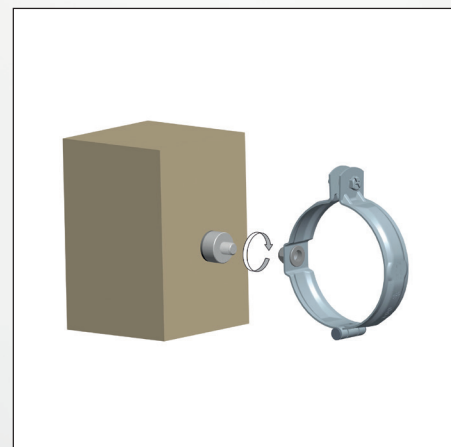
ASSEMBLY PROCEDURE



1 rubber pad, bottom part, wood screw, platform top part



2 fasten the platform bottom part with a pad using the wood screw



3 screw the upper part onto the bottom part and screw the sleeve on